



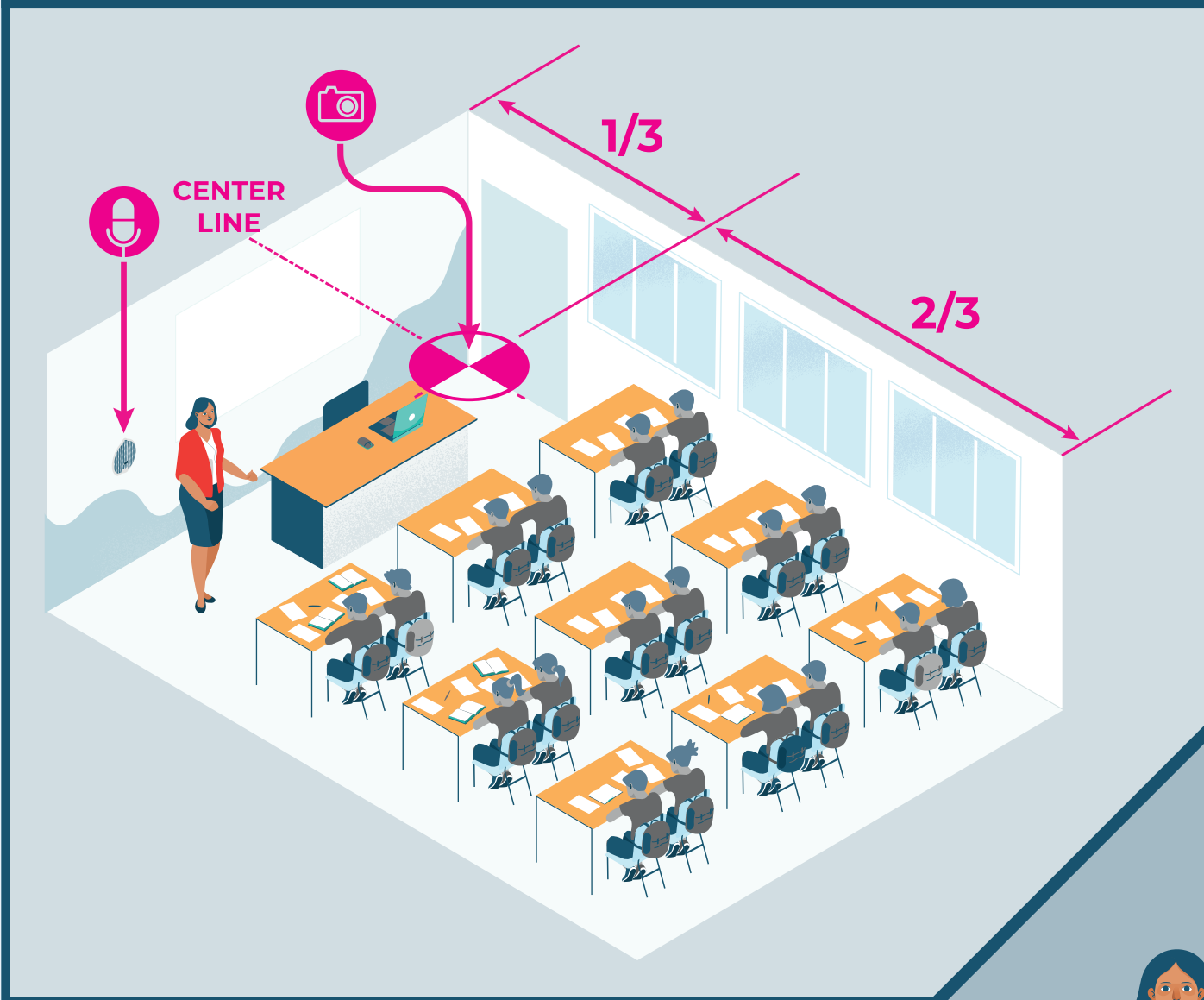
ONVU
LEARNING



QUICK START GUIDE

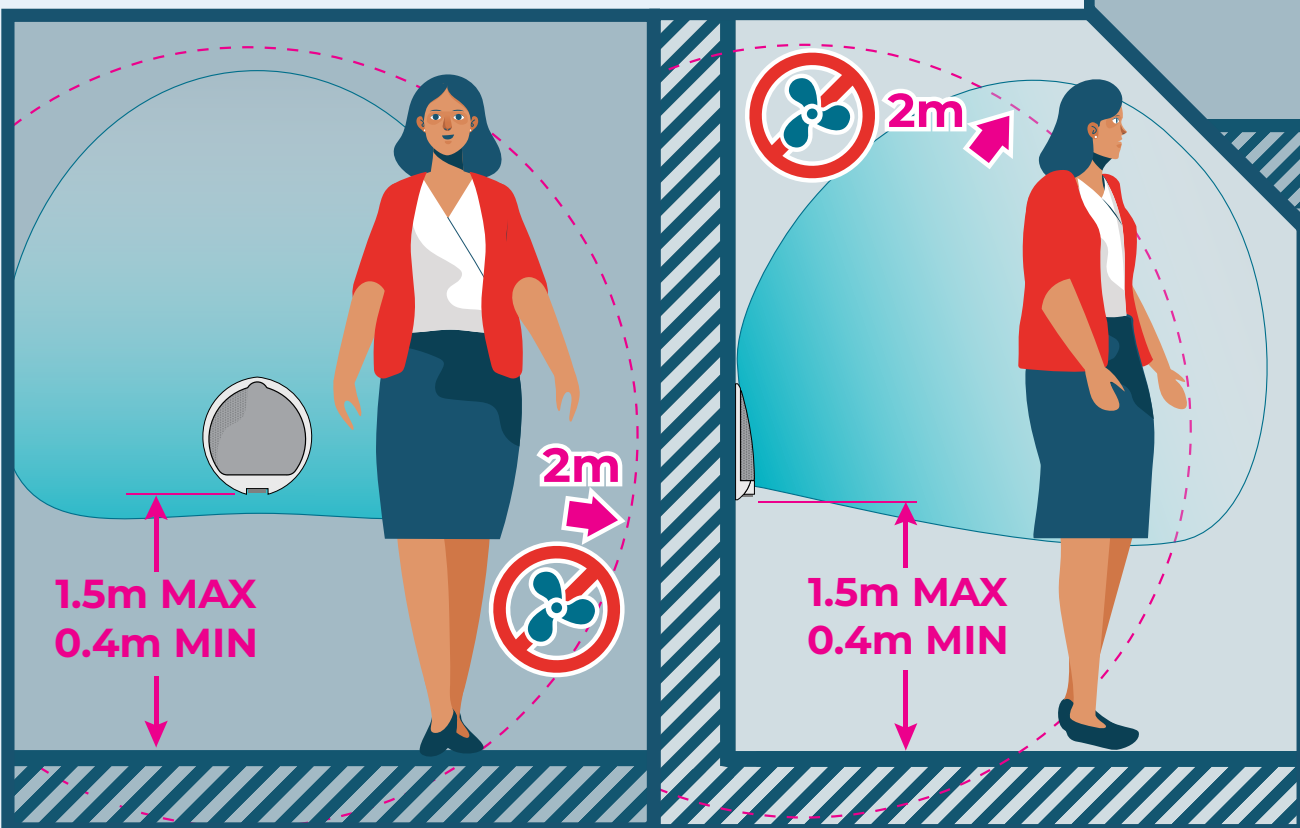
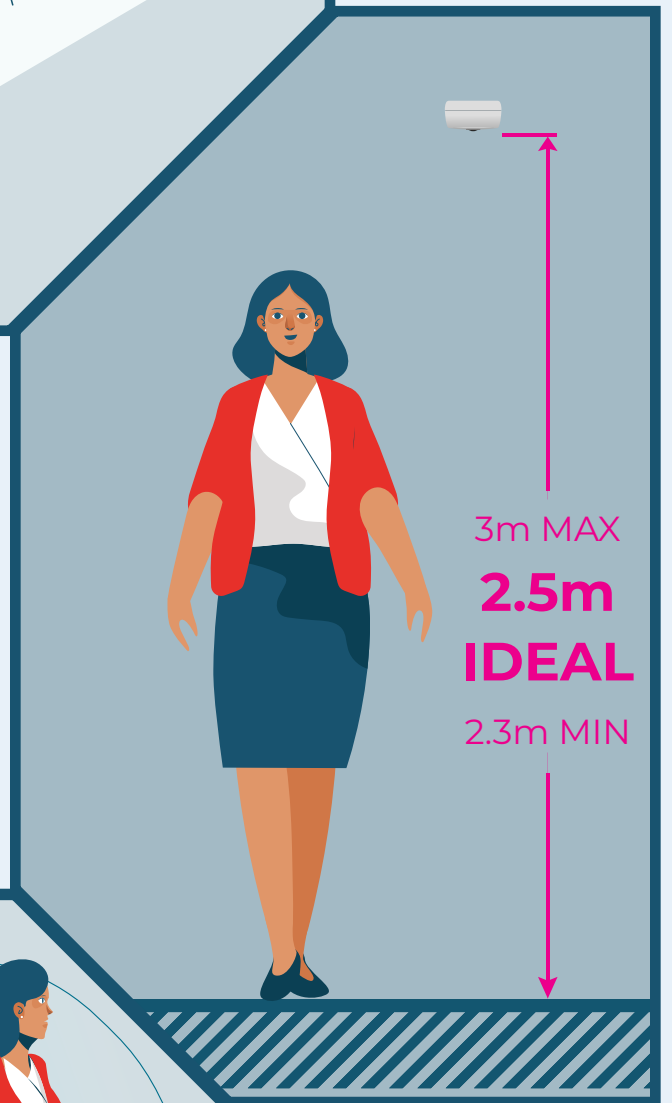
HARDWARE SETUP





MOUNT THE CAMERA $\frac{1}{3}$ OF THE LENGTH OF THE CLASS FROM THE FRONT

THE CAMERA SHOULD BE BETWEEN **2.3m** AND **3m** FROM THE FLOOR - **2.5m** IS THE IDEAL HEIGHT



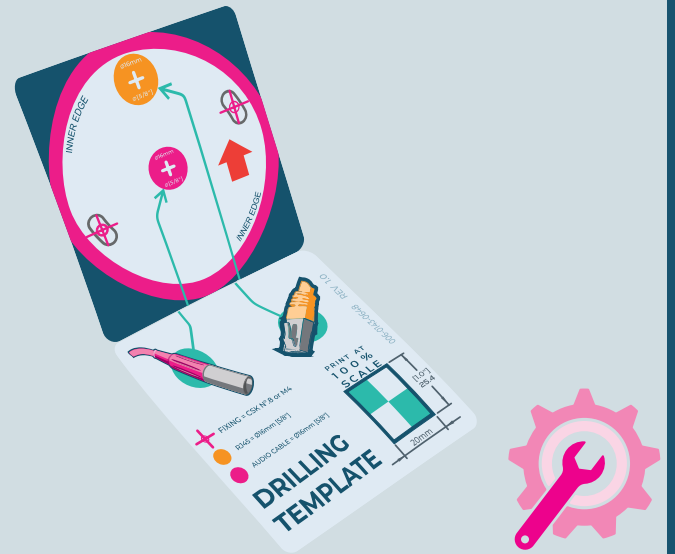
ENSURE THE MICROPHONE IS BETWEEN A MINIMUM OF **0.4m** AND A MAXIMUM OF **1.5m** FROM THE FLOOR

KEEP **2m** AWAY FROM ANY NOISE SOURCES LIKE AIR CONDITIONING UNITS, COMPUTERS OR OTHER IT EQUIPMENT.

HIGH RESOLUTION
360 CAMERA MODULE



DRILLING TEMPLATE



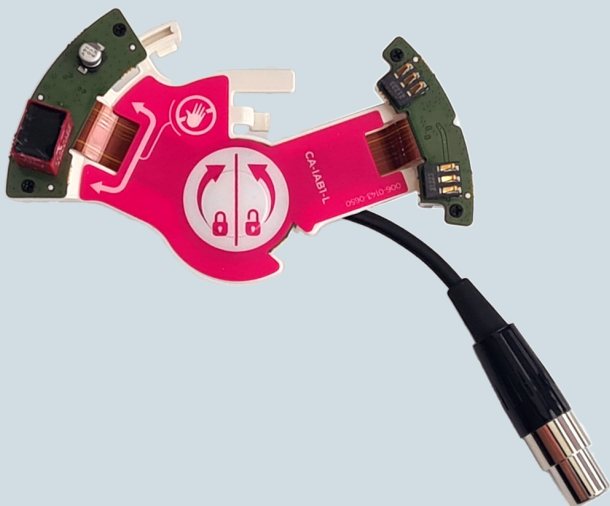
ONVU LEARNING CAMERA
ENCLOSURE



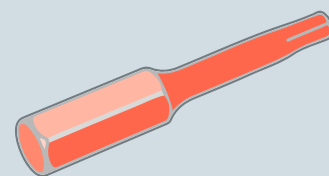
MICRO SD CARD



AUDIO BOARD
*MOUNTED IN CAMERA ENCLOSURE



HEX TOOL

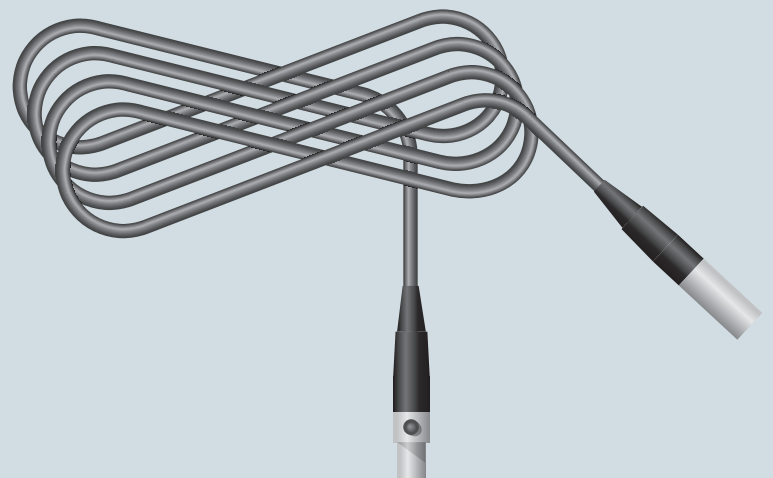


MICROPHONE

HIGH RESOLUTION
360 CAMERA MODULE



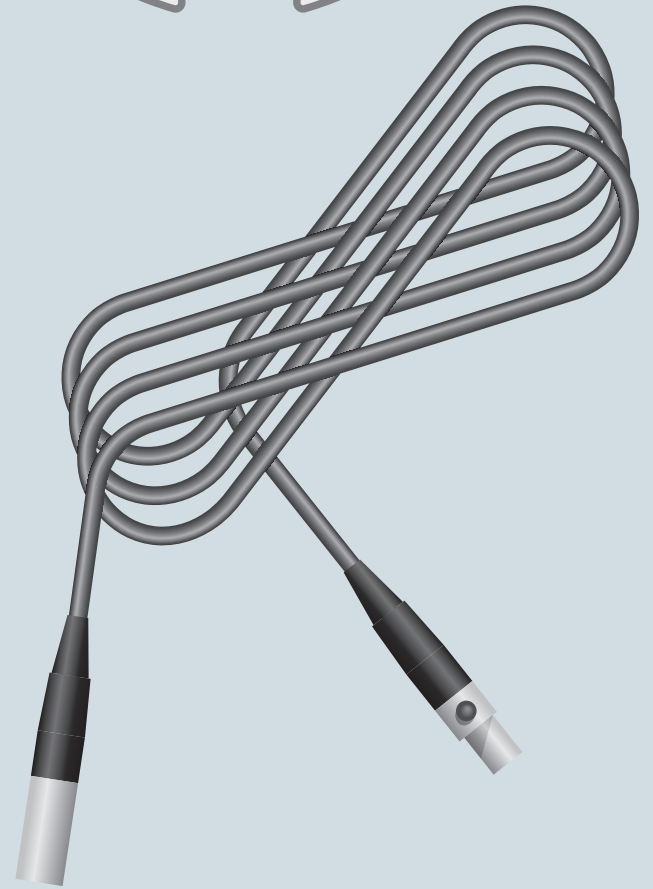
5M
AUDIO CABLE



MICROPHONE INSTALLATION

PARTS REQUIRED

No	DESCRIPTION
1	MICROPHONE
2	5m MINI XLR CABLE

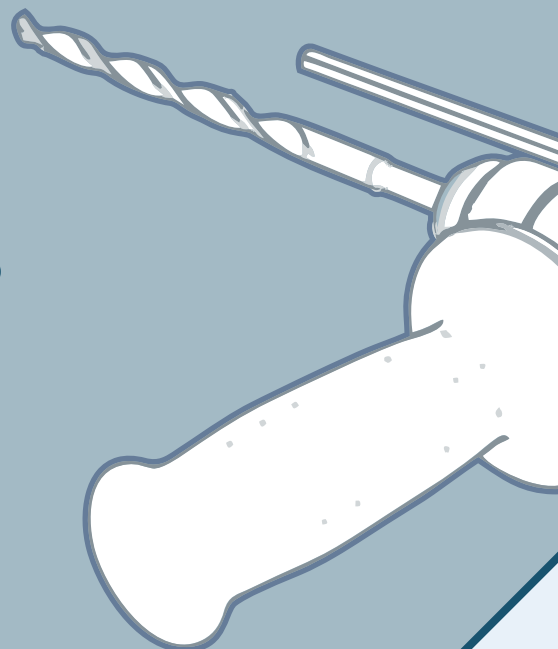


51.2mm



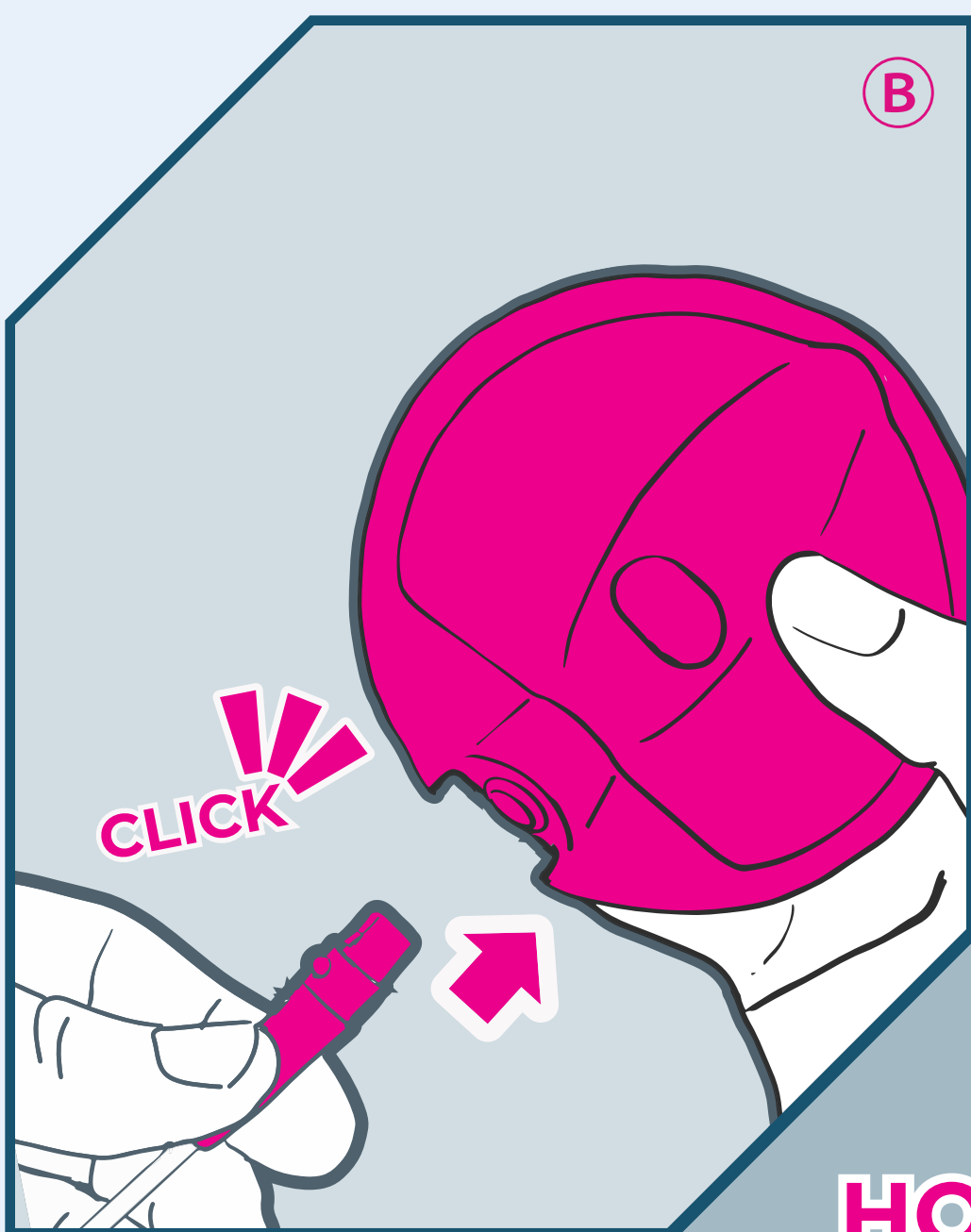
2x CSK
N°8 or M4
FIXINGS

FIXINGS NOT SUPPLIED



A

B



FIXINGS NOT SUPPLIED

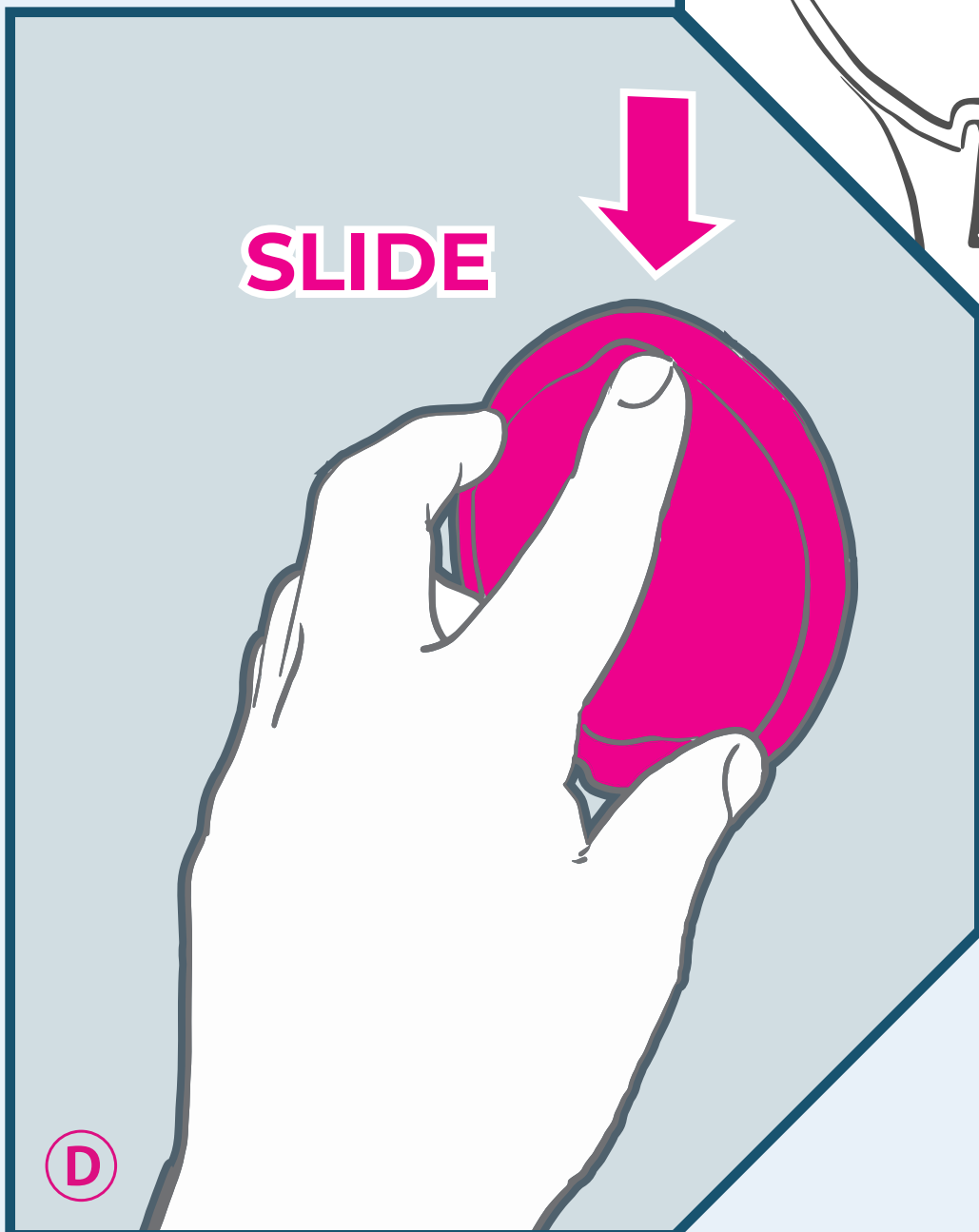
HOOK



2x CSK
N°8 or M4
FIXINGS

C

SLIDE



SELECT CAMERA INSTALLATION TYPE



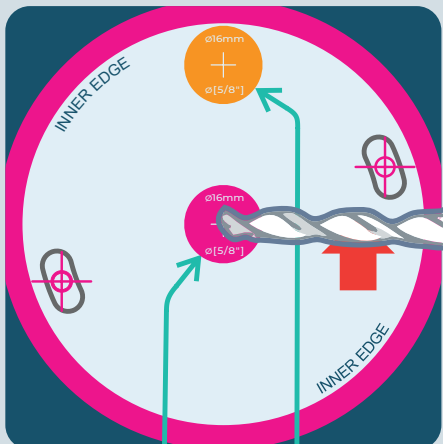
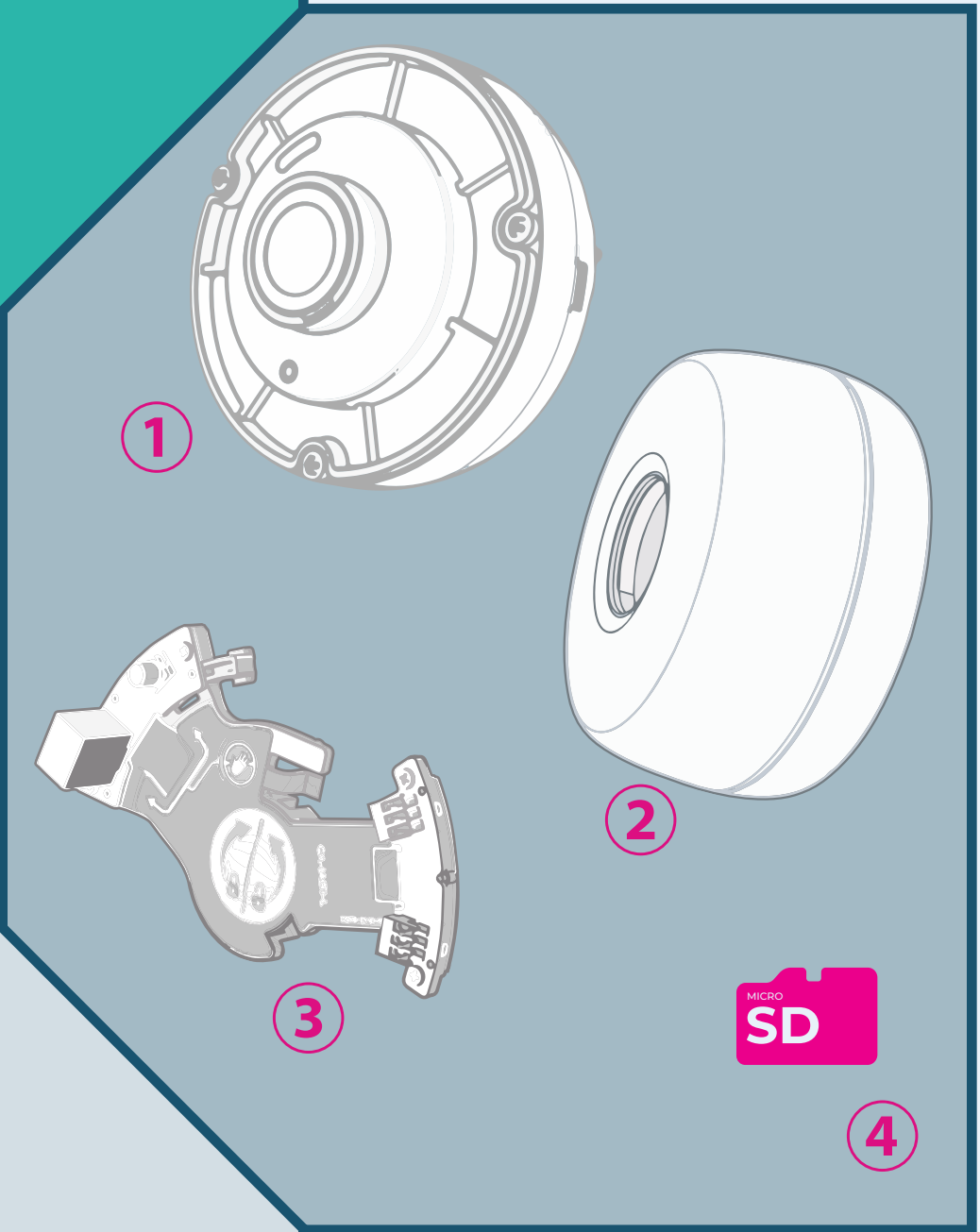
READ ALL STEPS BEFORE INSTALLING




SURFACE MOUNT INSTALLATION

PARTS REQUIRED

No	DESCRIPTION
1	CAMERA MODULE
2	CAMERA ENCLOSURE
3	AUDIO BOARD
4	SD CARD
5	DRILLING TEMPLATE*
6	HEX TOOL*

*NOT SHOWN




 FIXING = CSK N°.8 or M4
 RJ45 = $\varnothing 16\text{mm}$ [5/8"]
 AUDIO CABLE = $\varnothing 16\text{mm}$ [5/8"]

DRILLING TEMPLATE

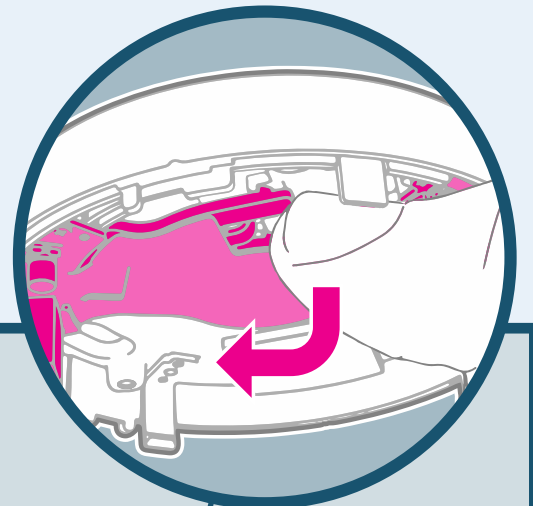
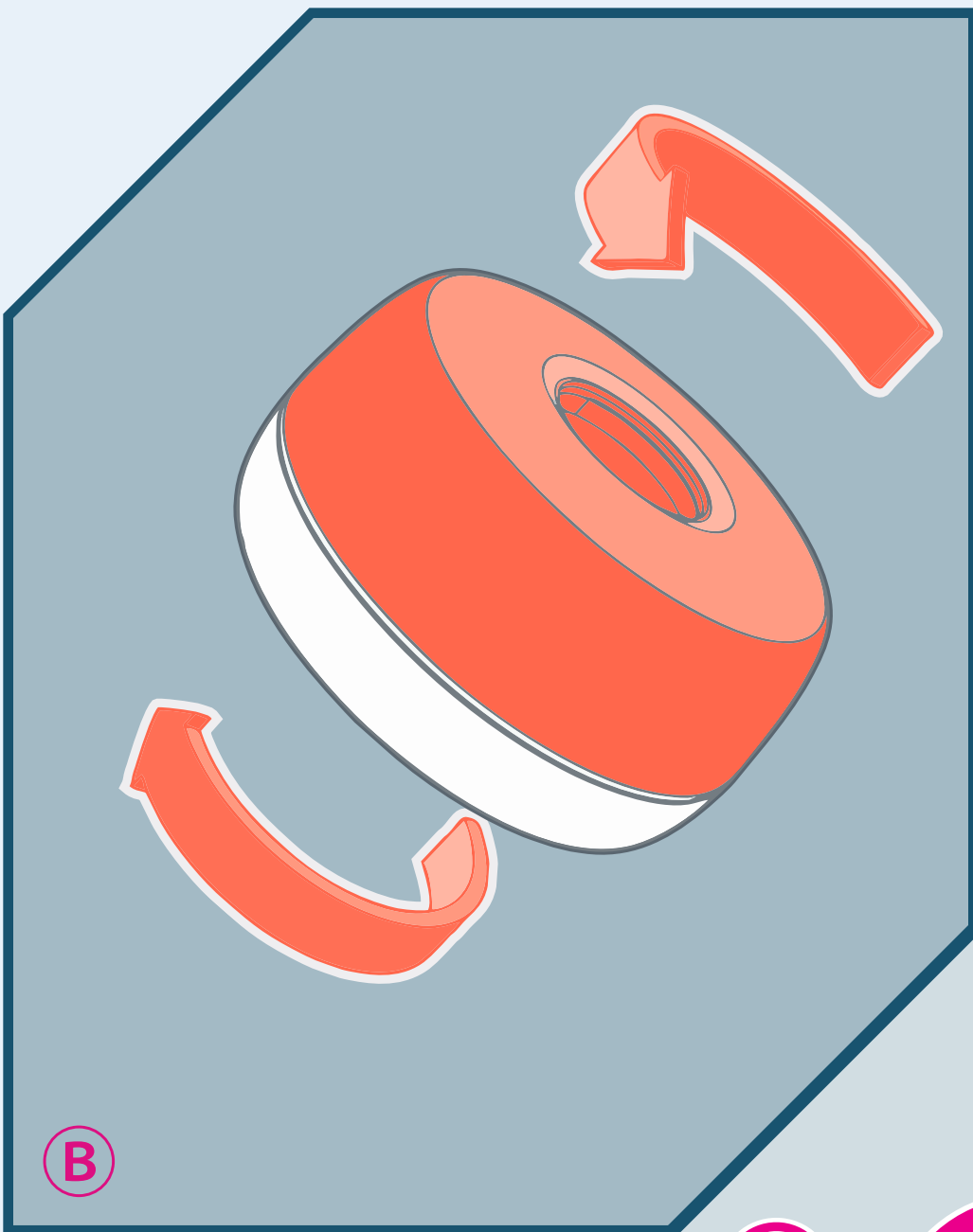
PRINT AT 100% SCALE

006-0143-0648 REV 1.0

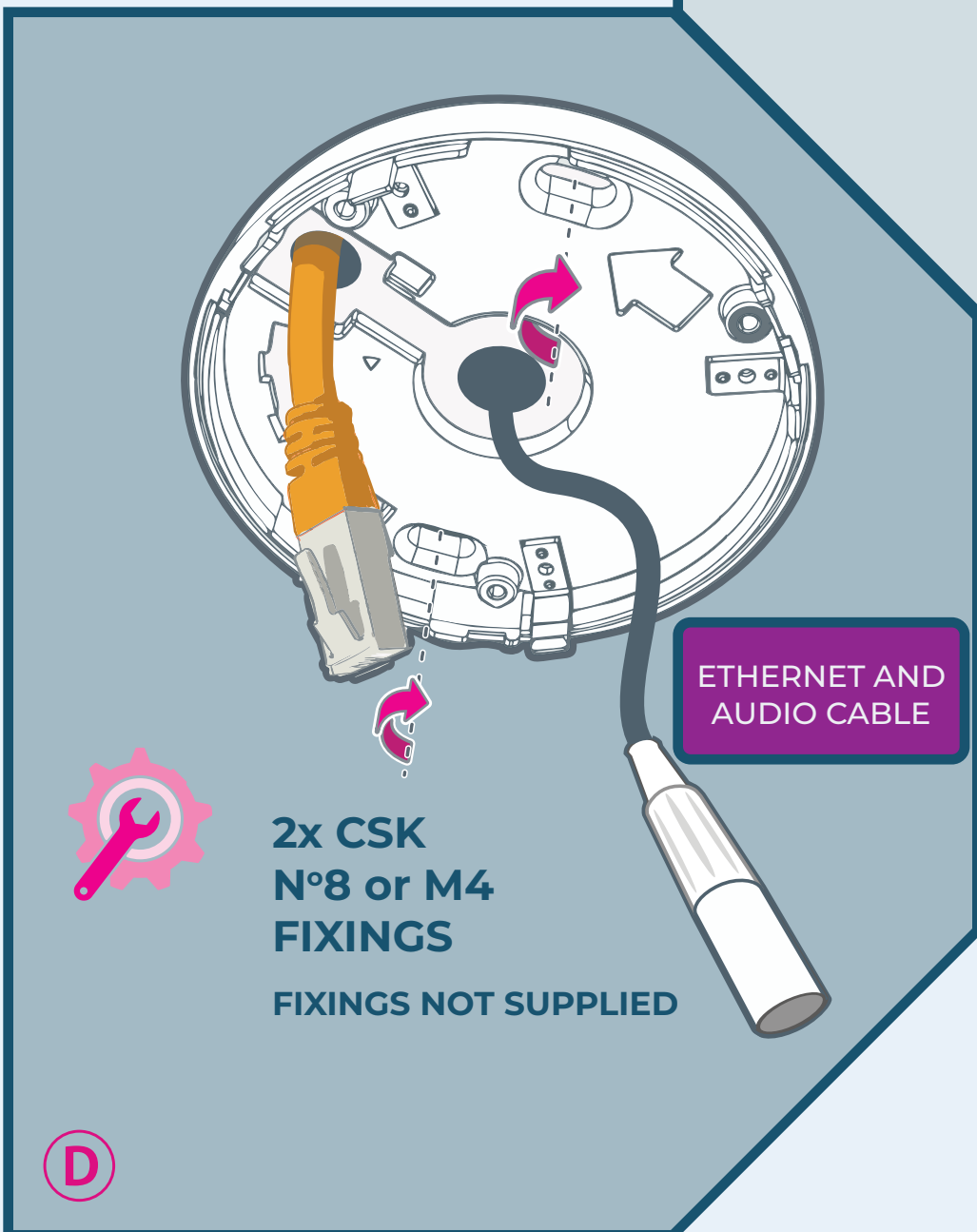
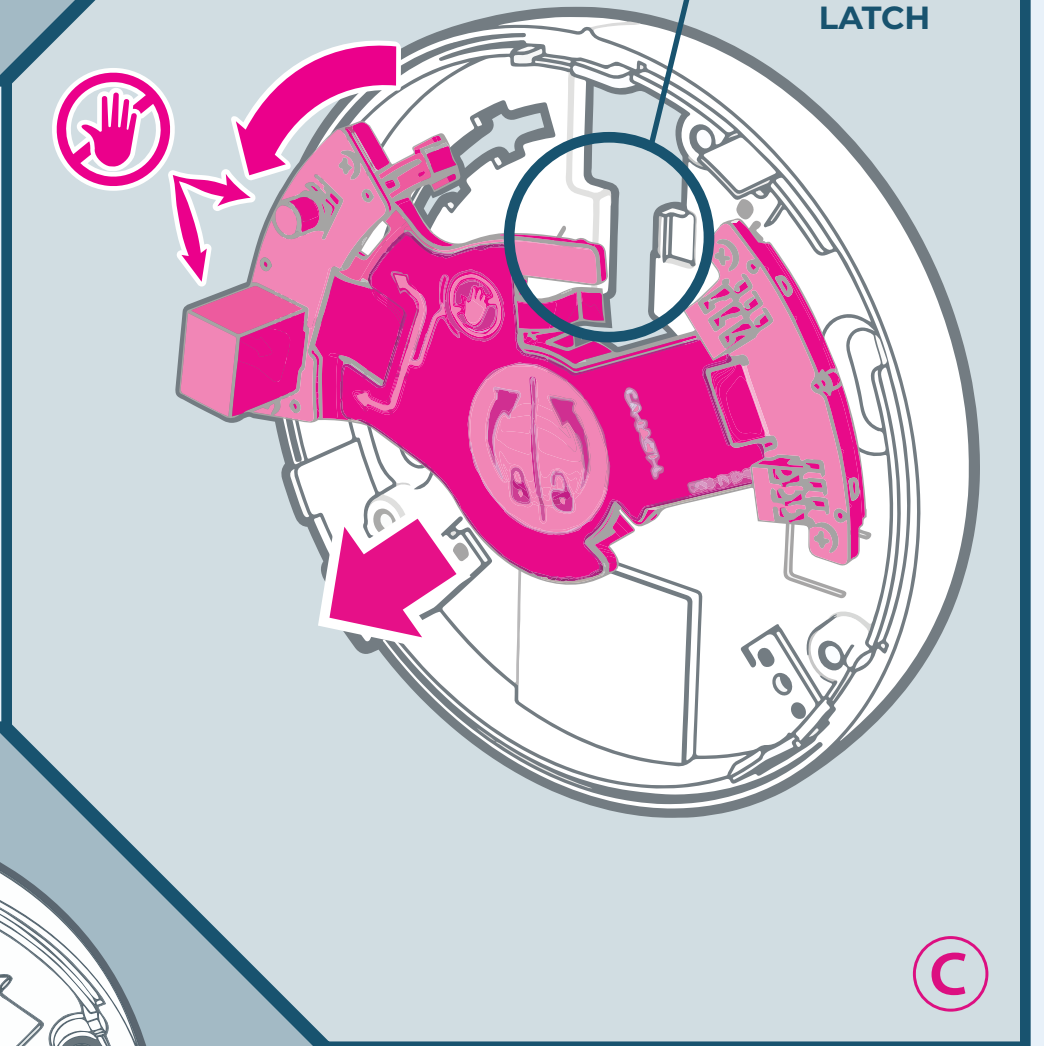


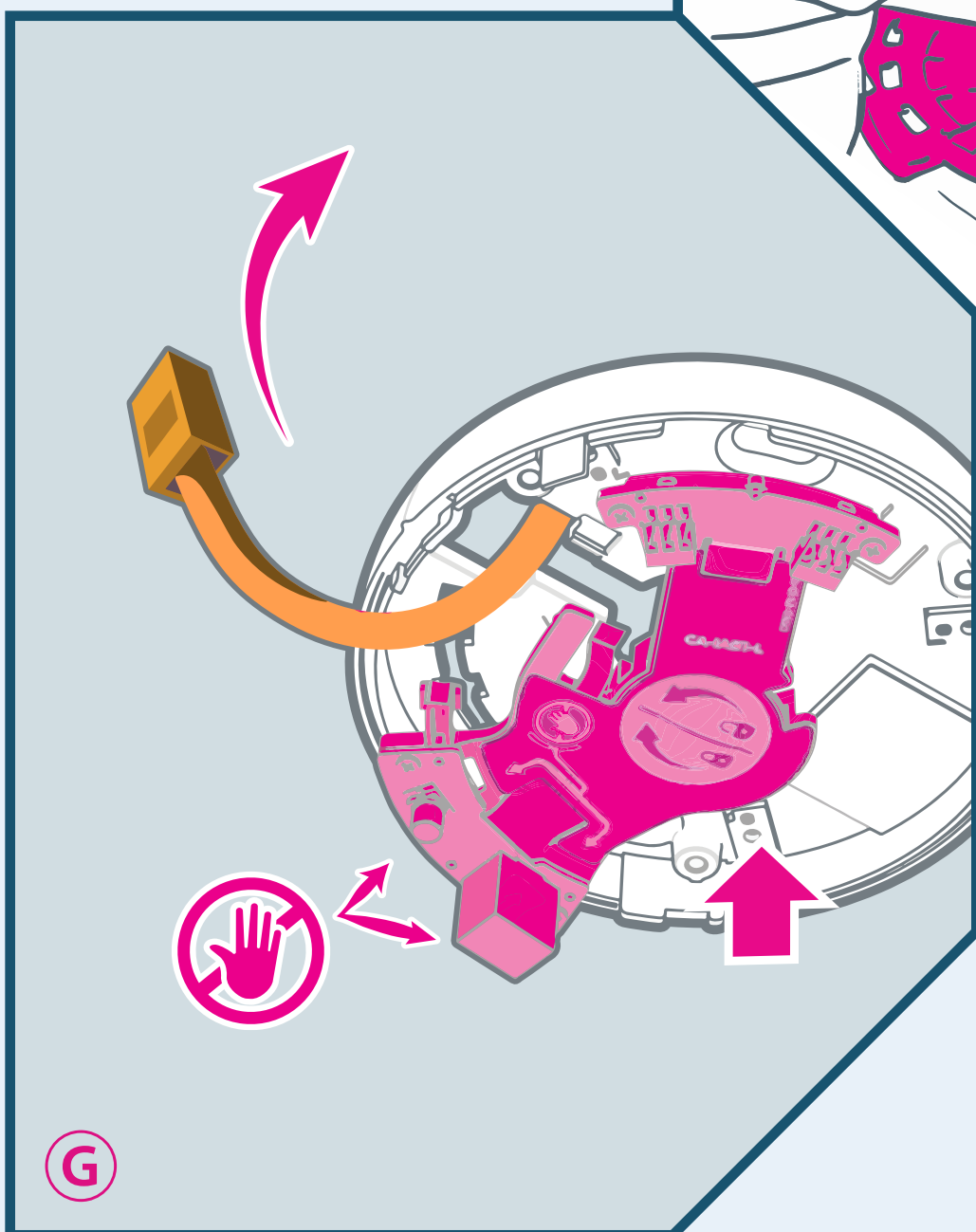
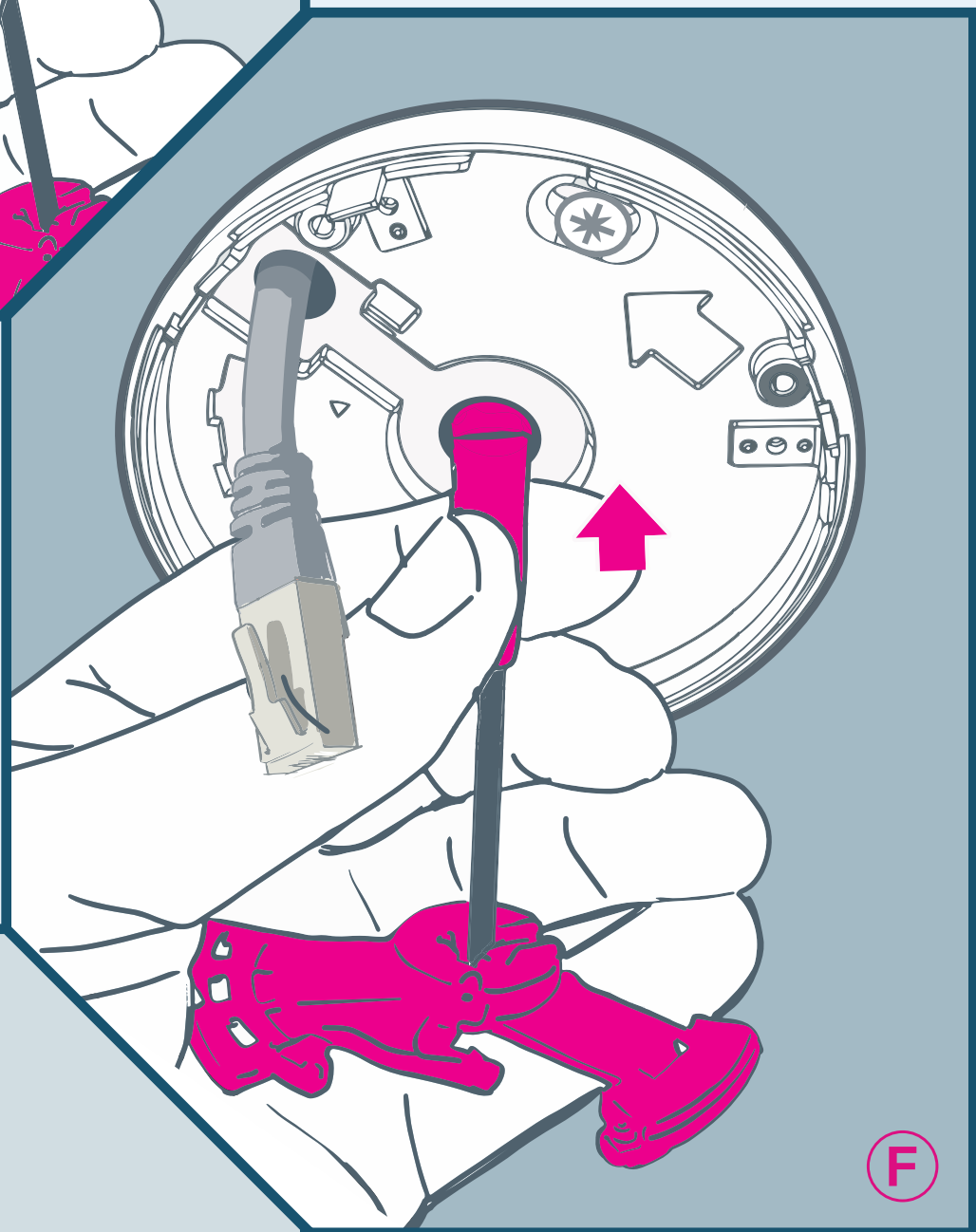
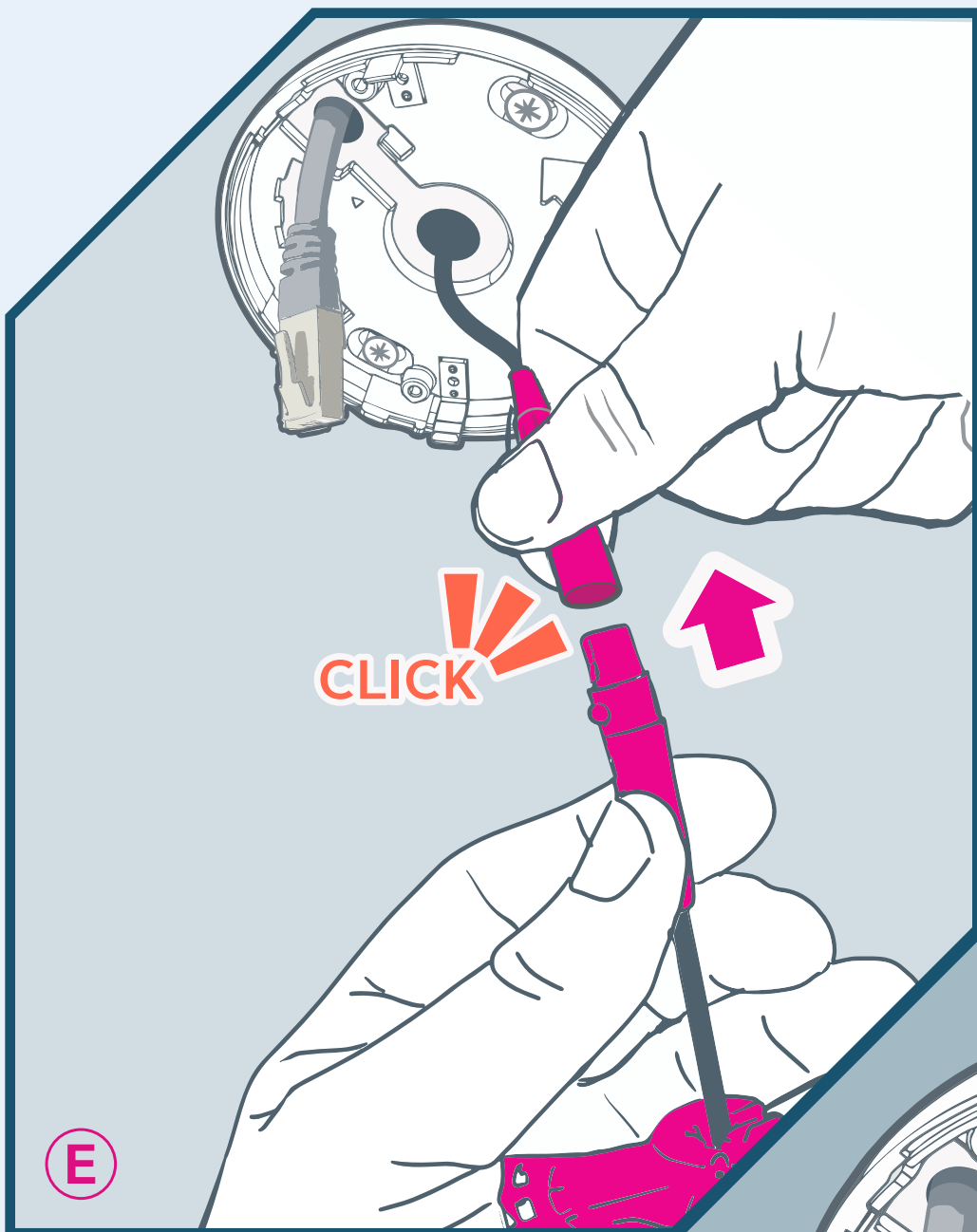
A

REMOVE TEMPLATE AFTER DRILLING



UNHOOK LATCH

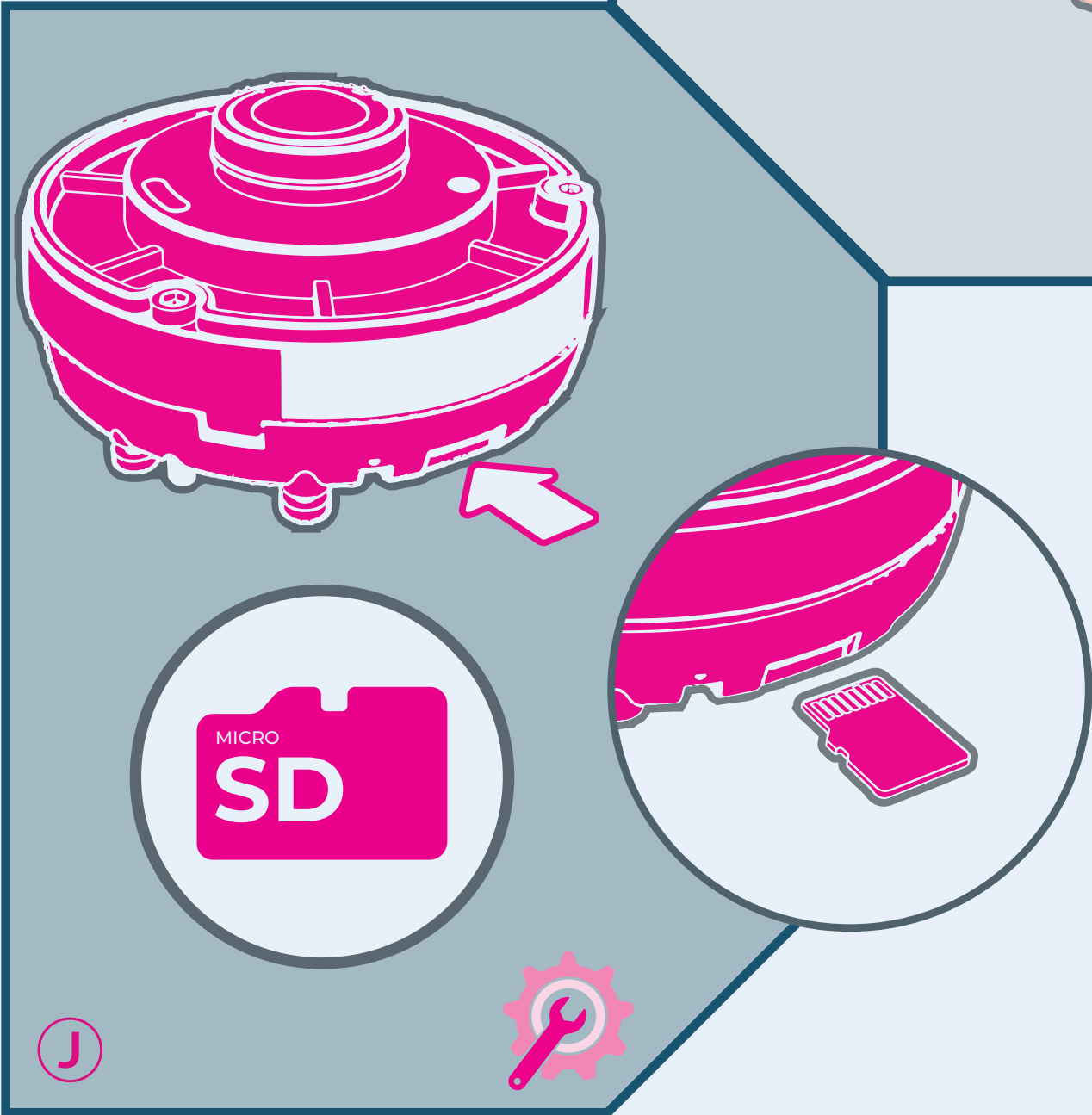
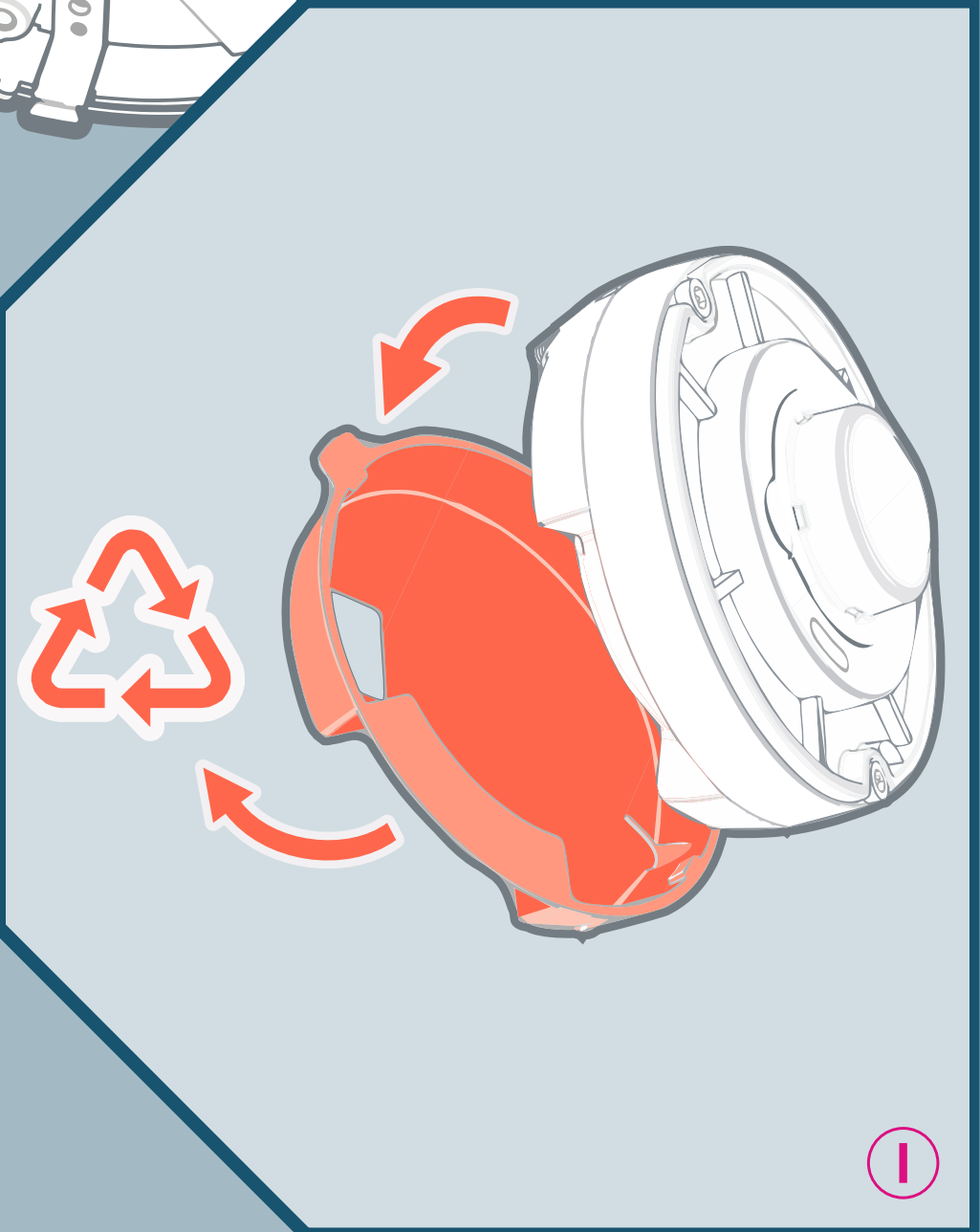
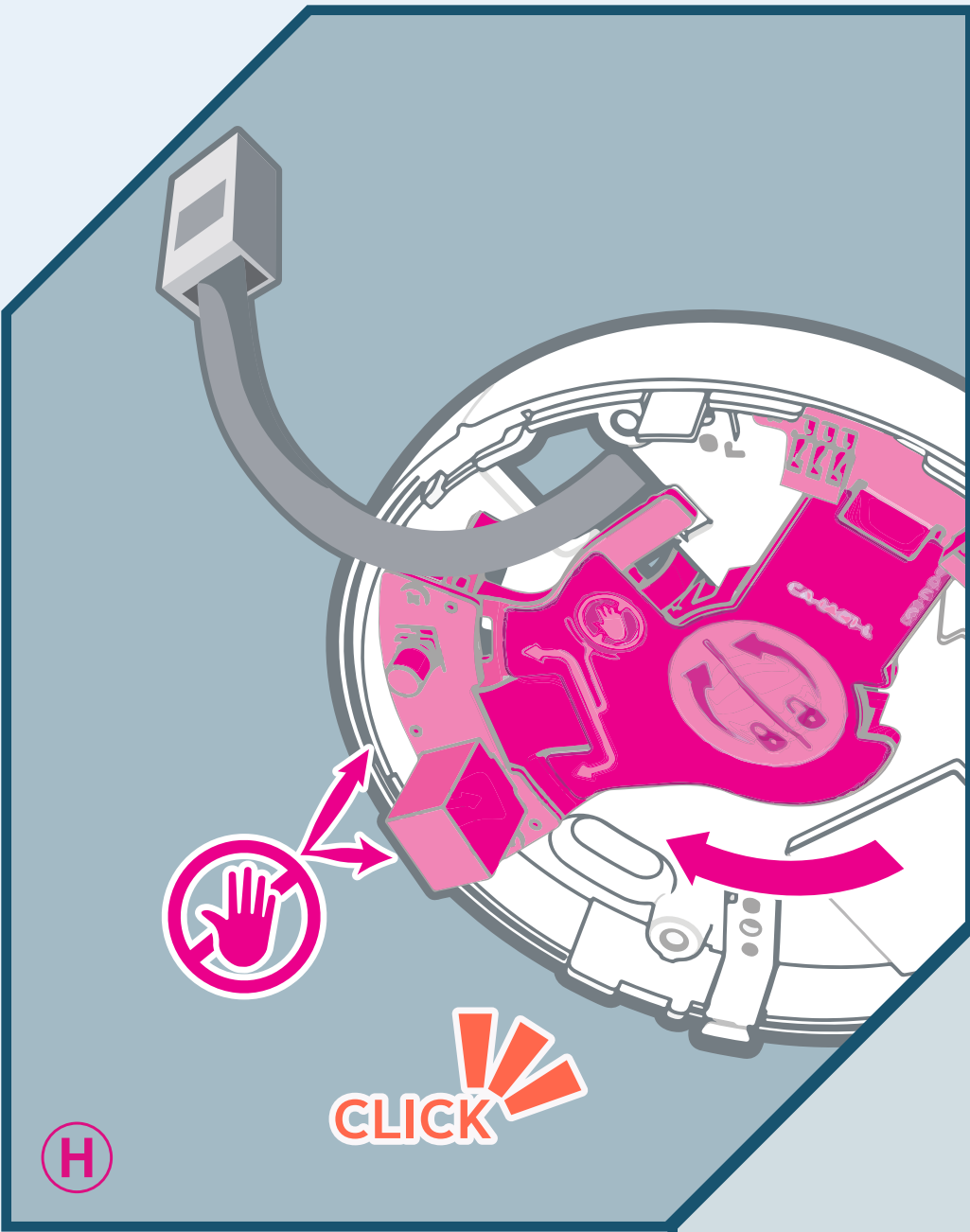




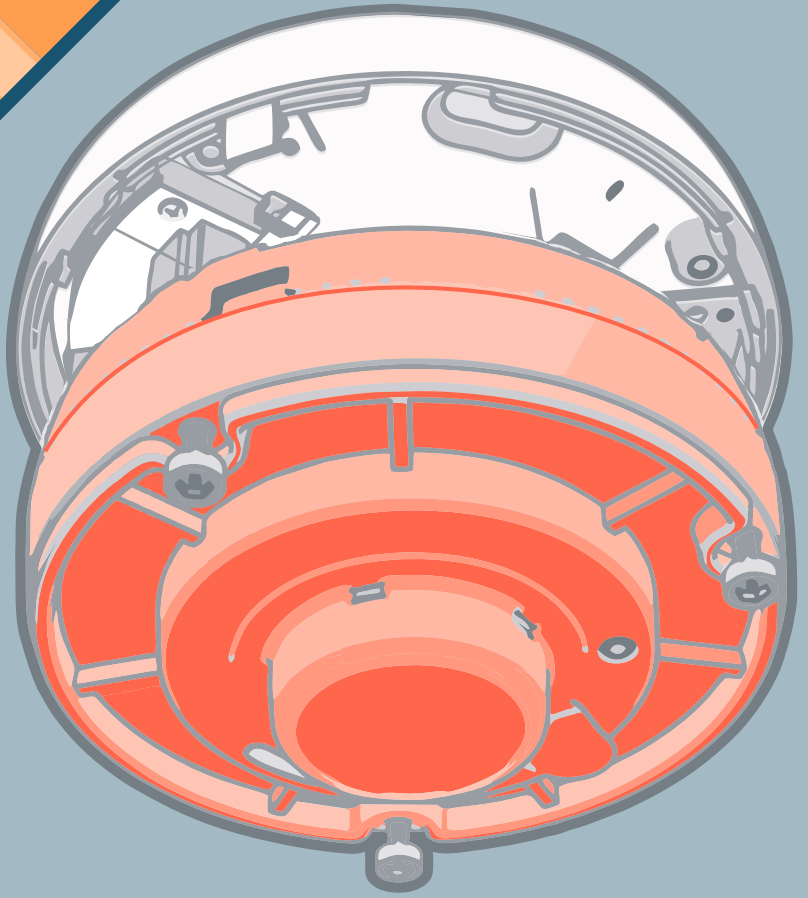
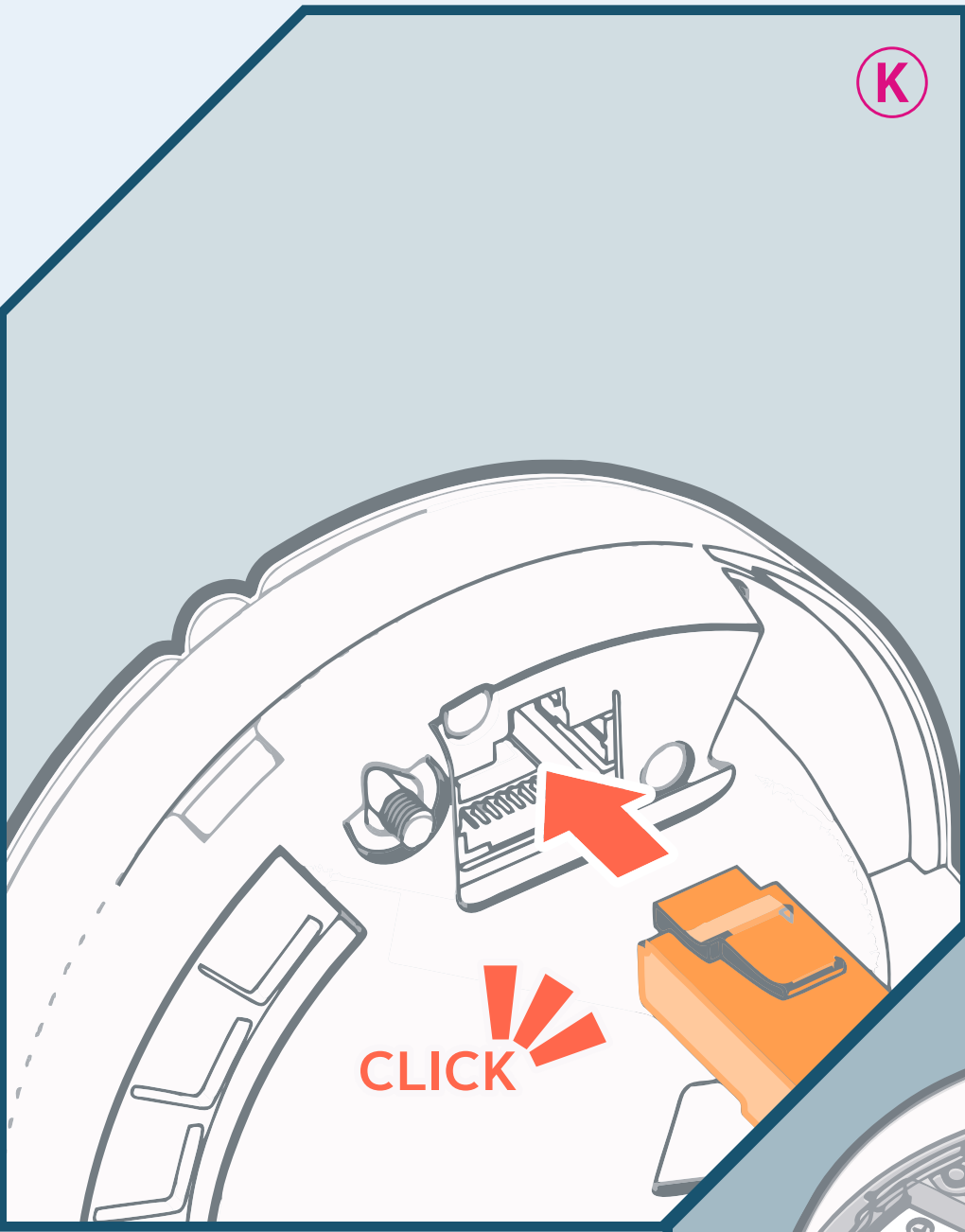
E

F

G

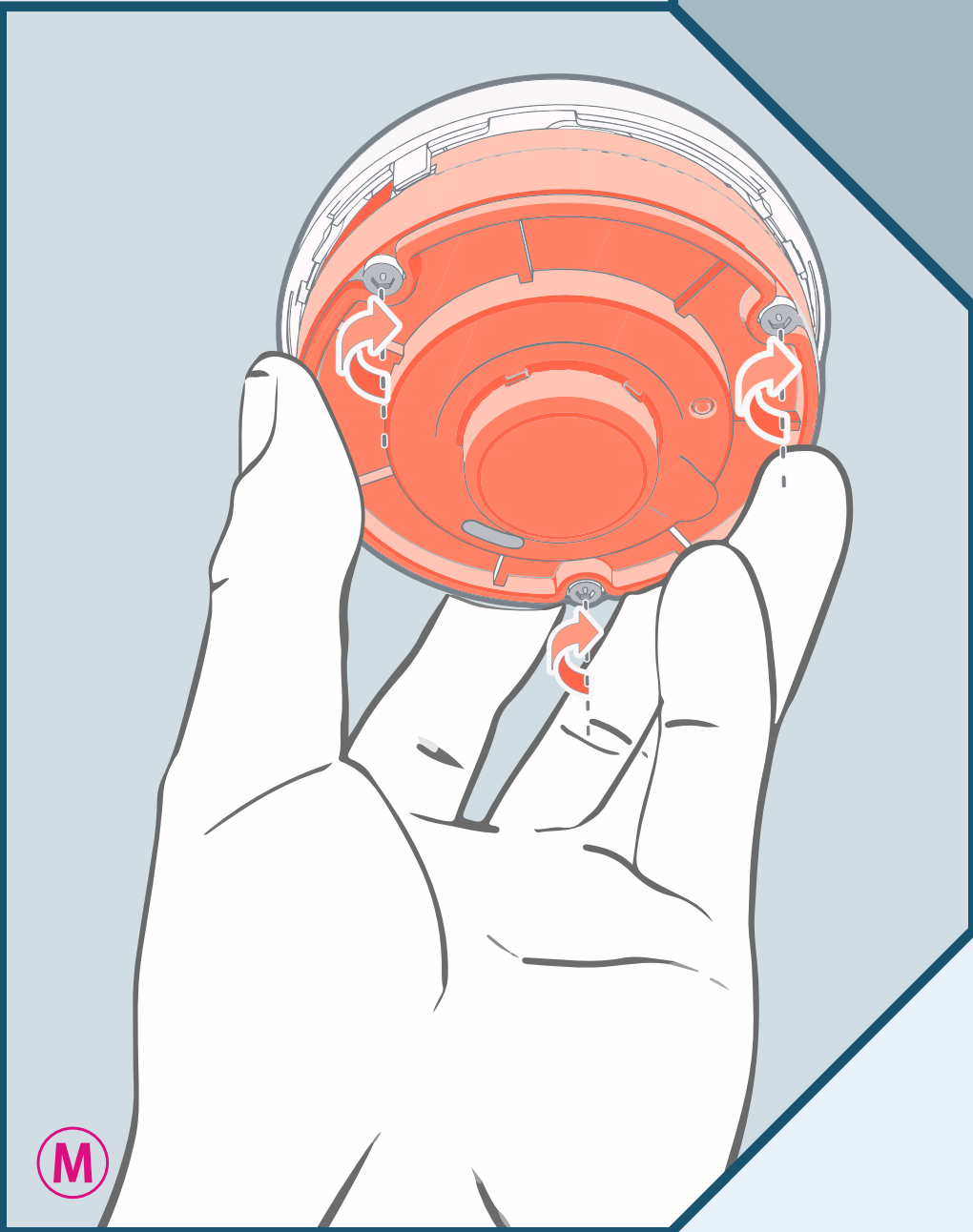


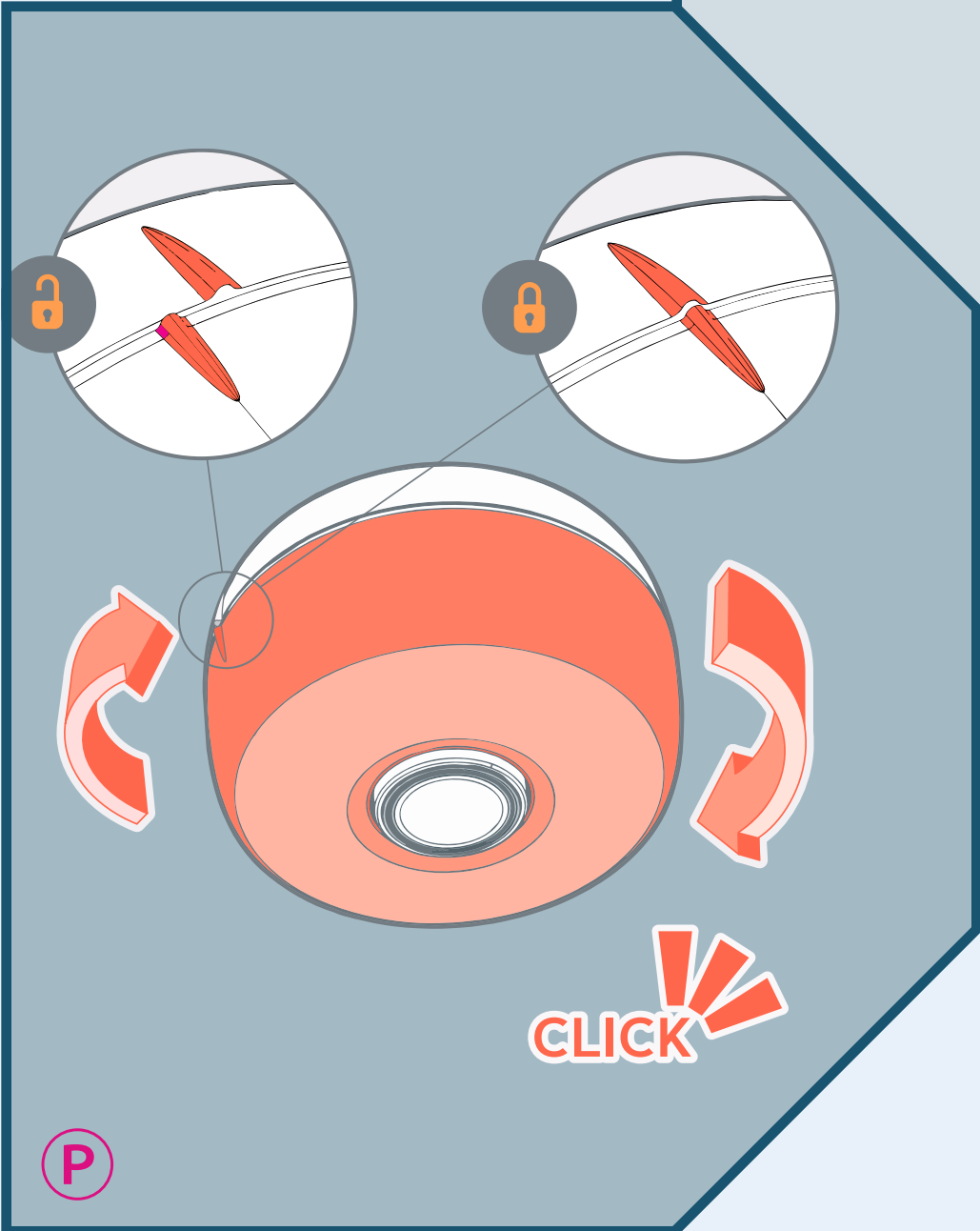
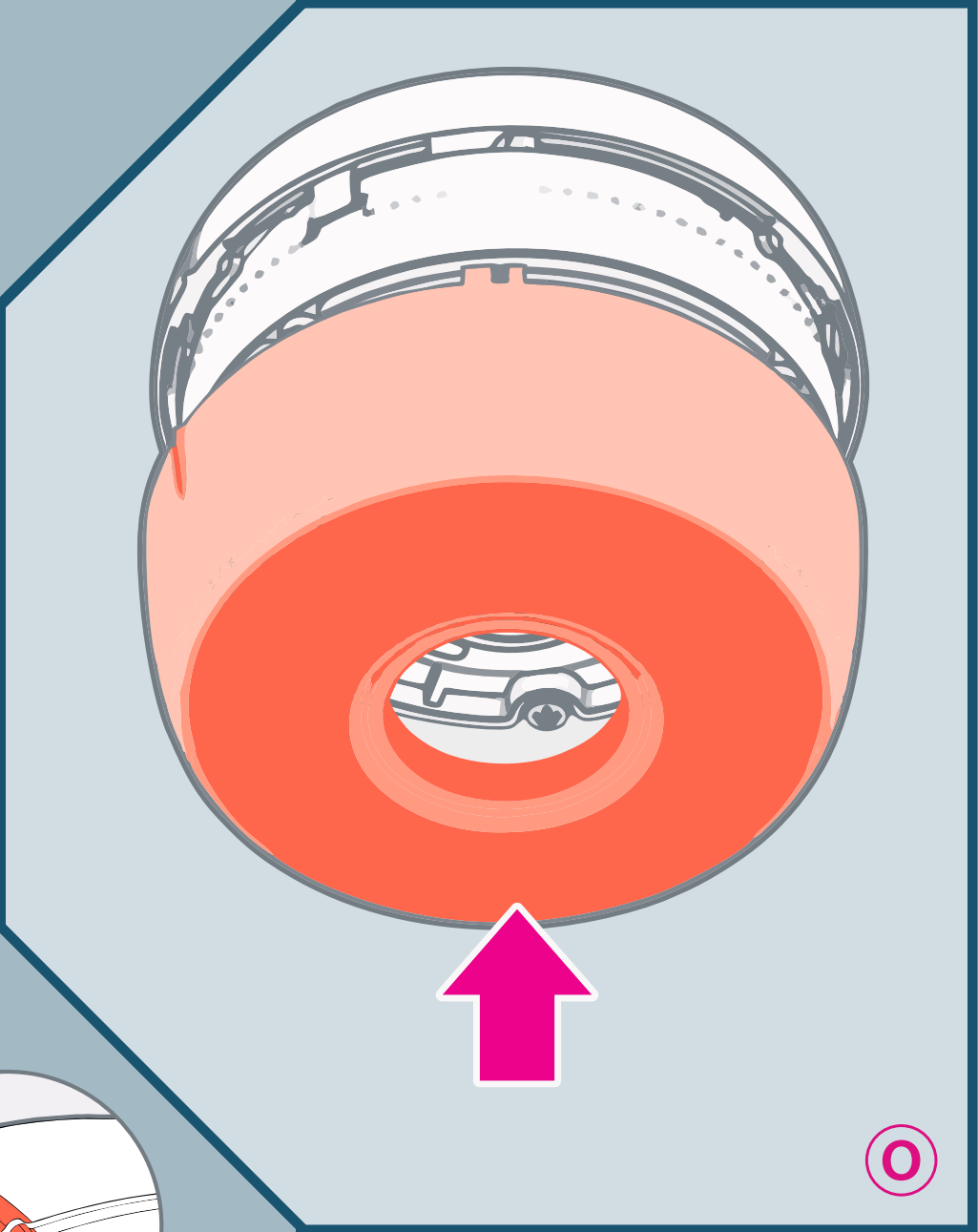
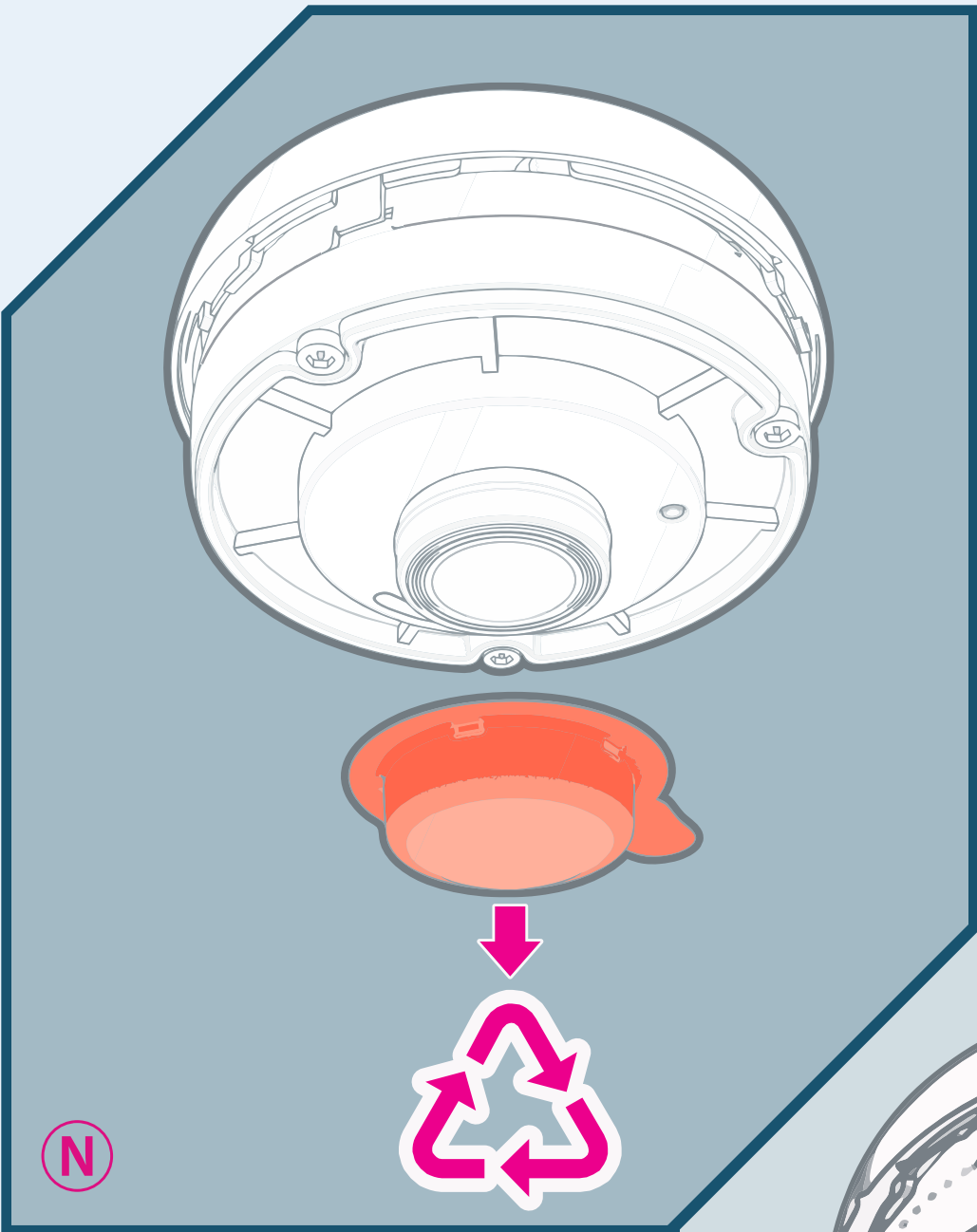
K



L

M





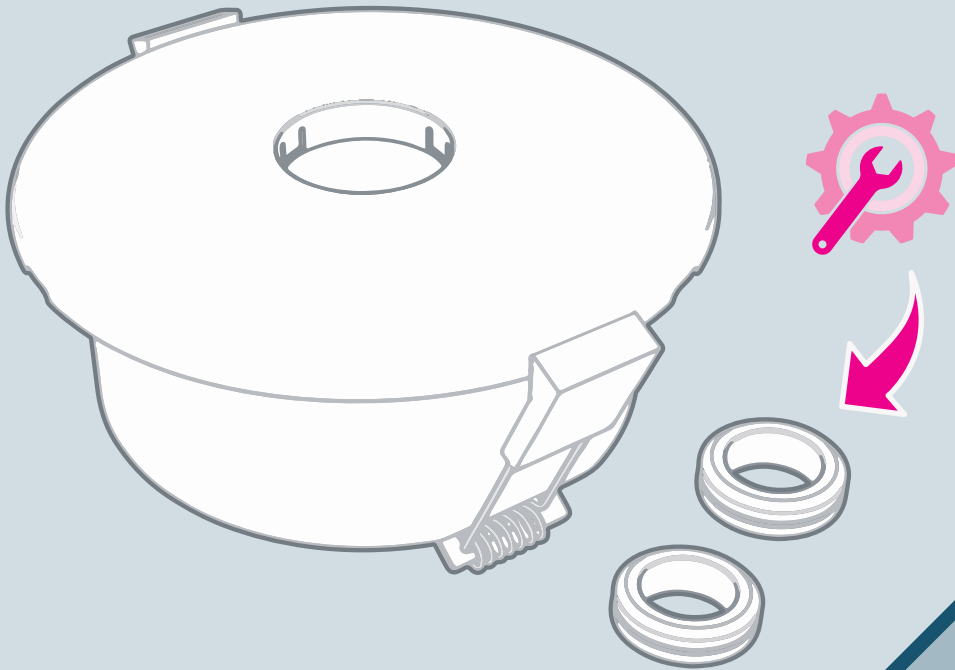
N

O

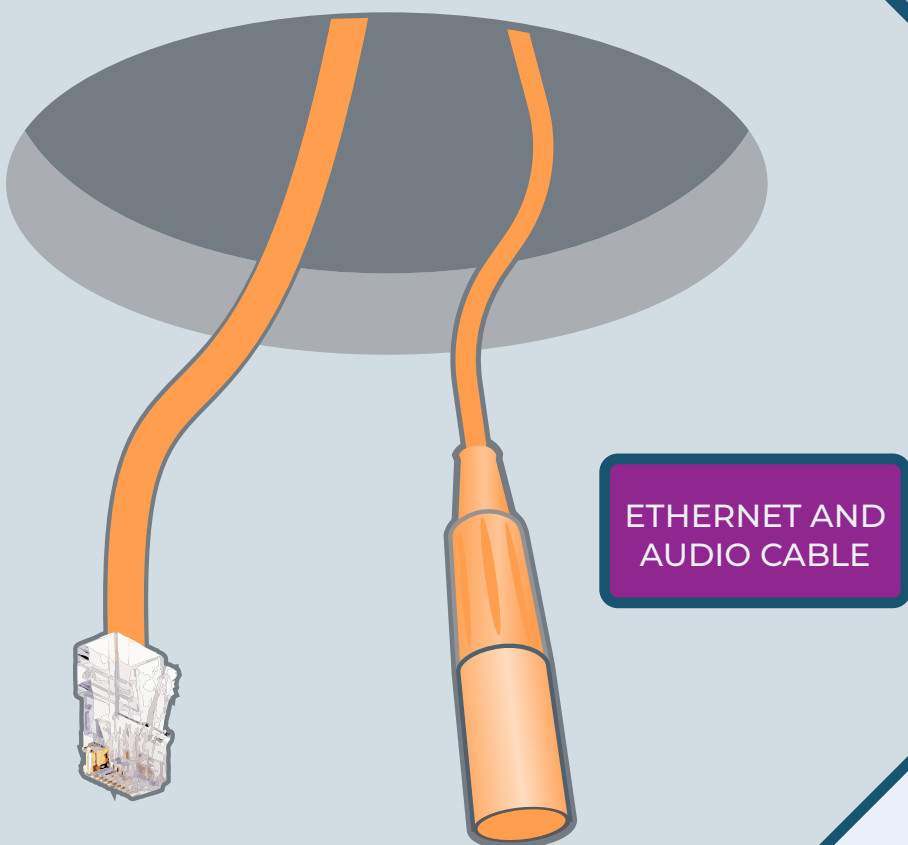
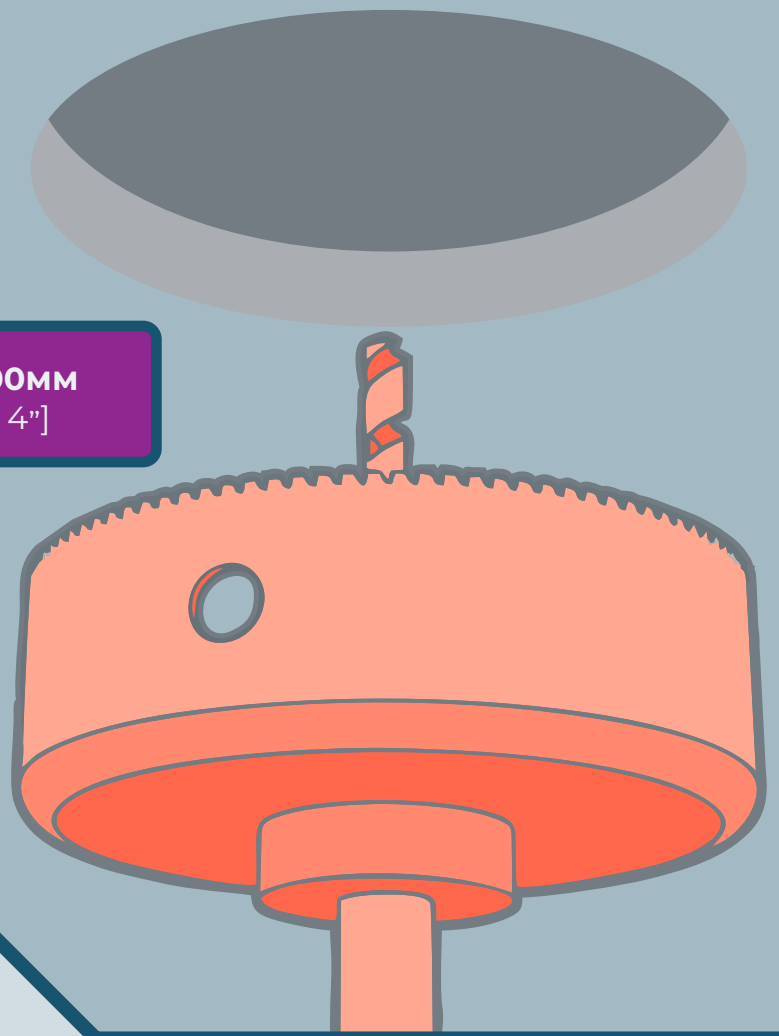
P

RECESSED MOUNT

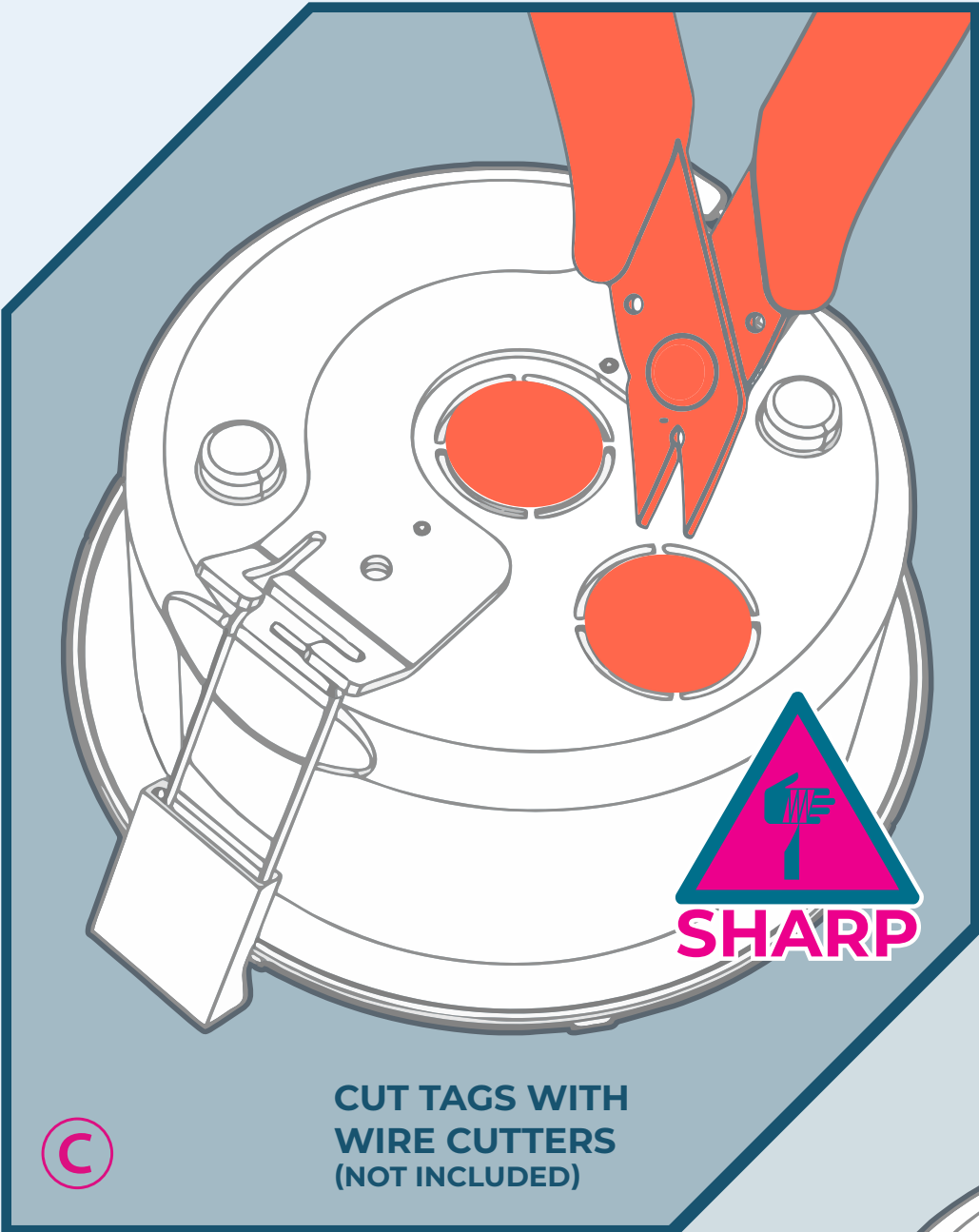
ADDITIONAL PARTS REQUIRED



No	DESCRIPTION
1	RECESSED ENCLOSURE
2	GROMMETS X 2

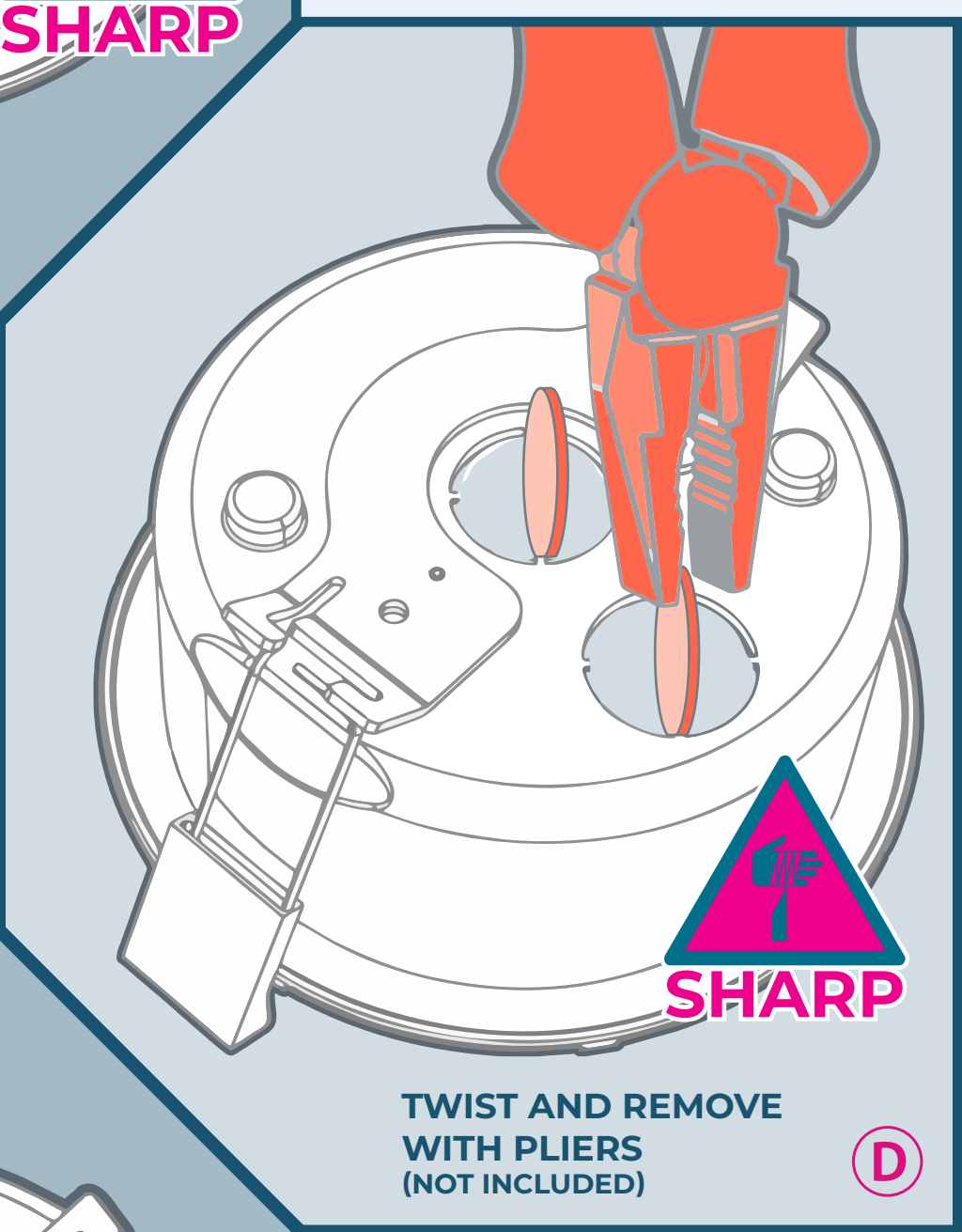


B



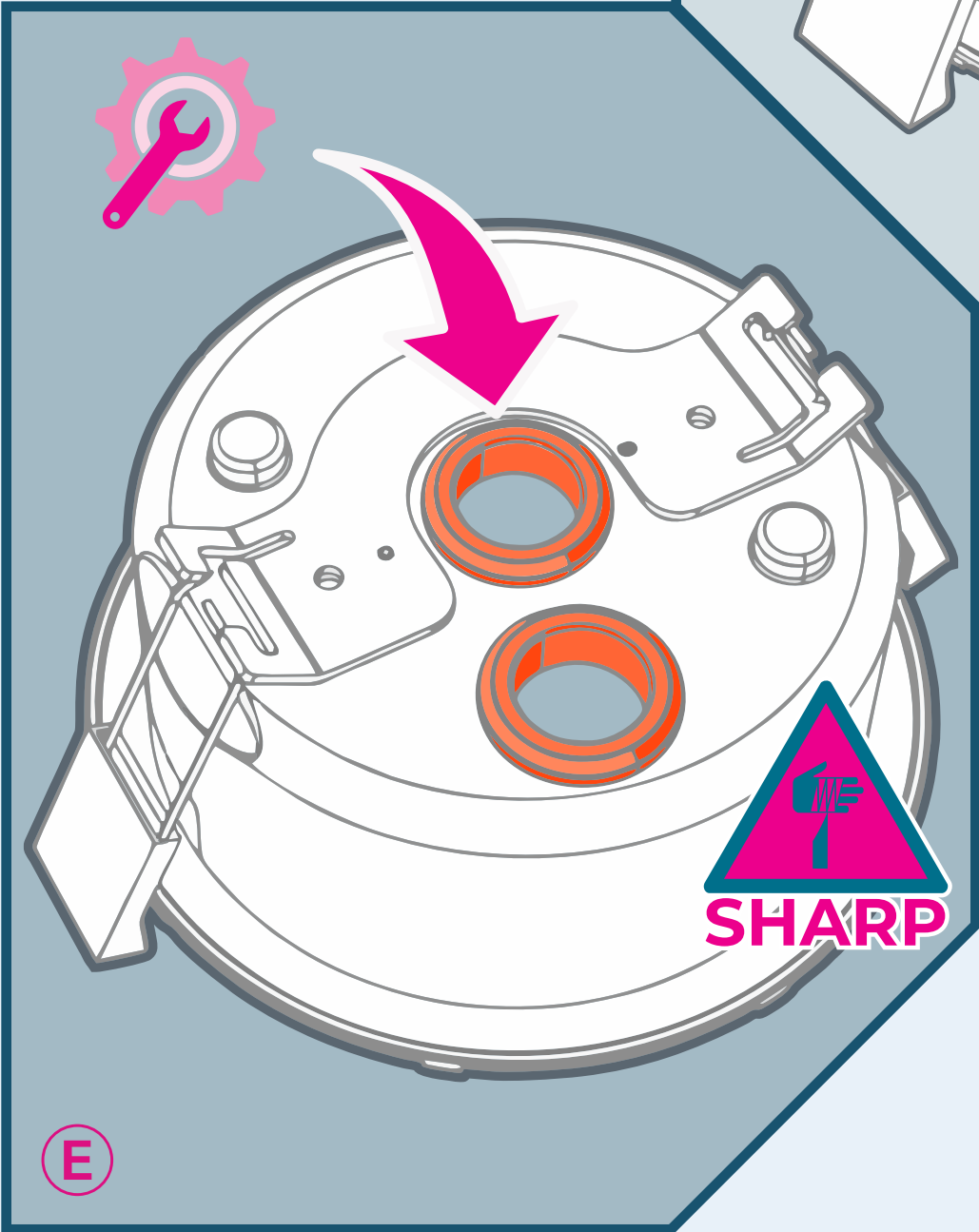
C

CUT TAGS WITH
WIRE CUTTERS
(NOT INCLUDED)

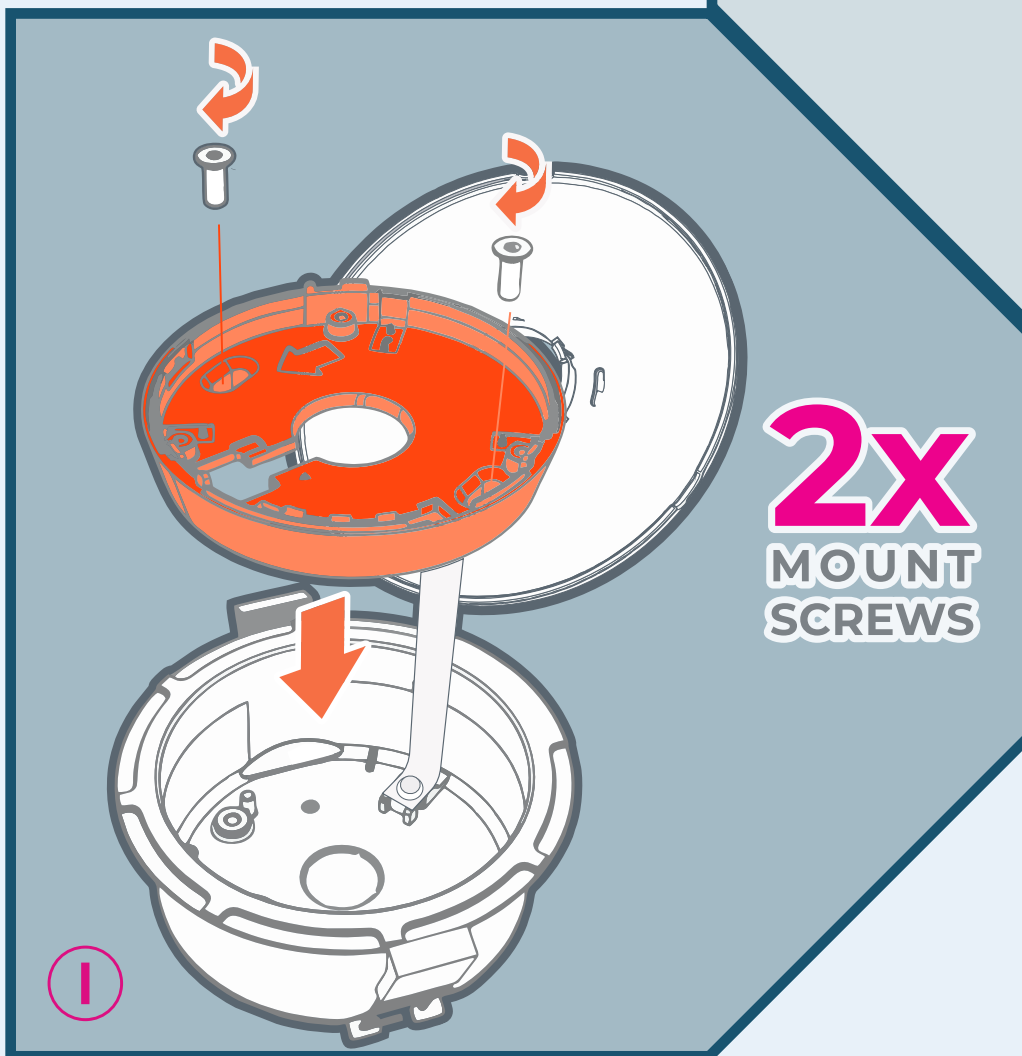
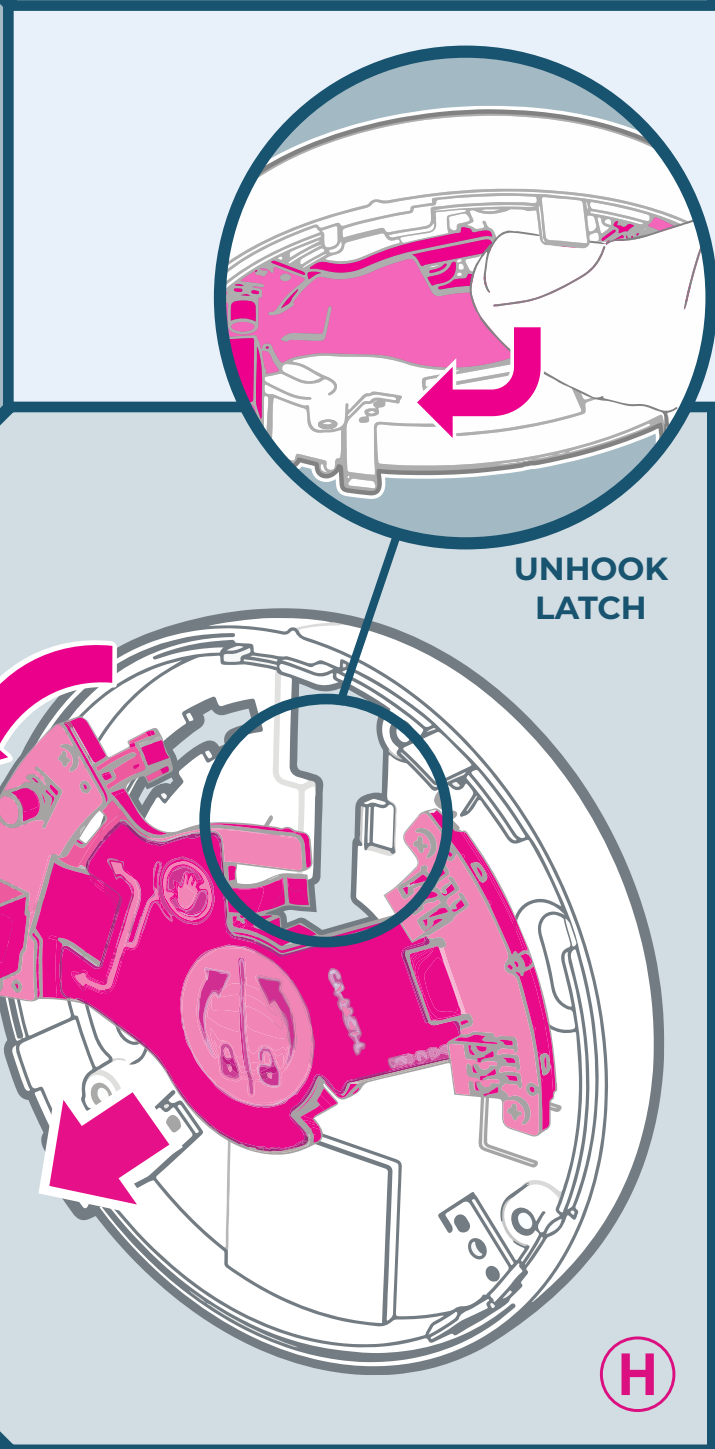
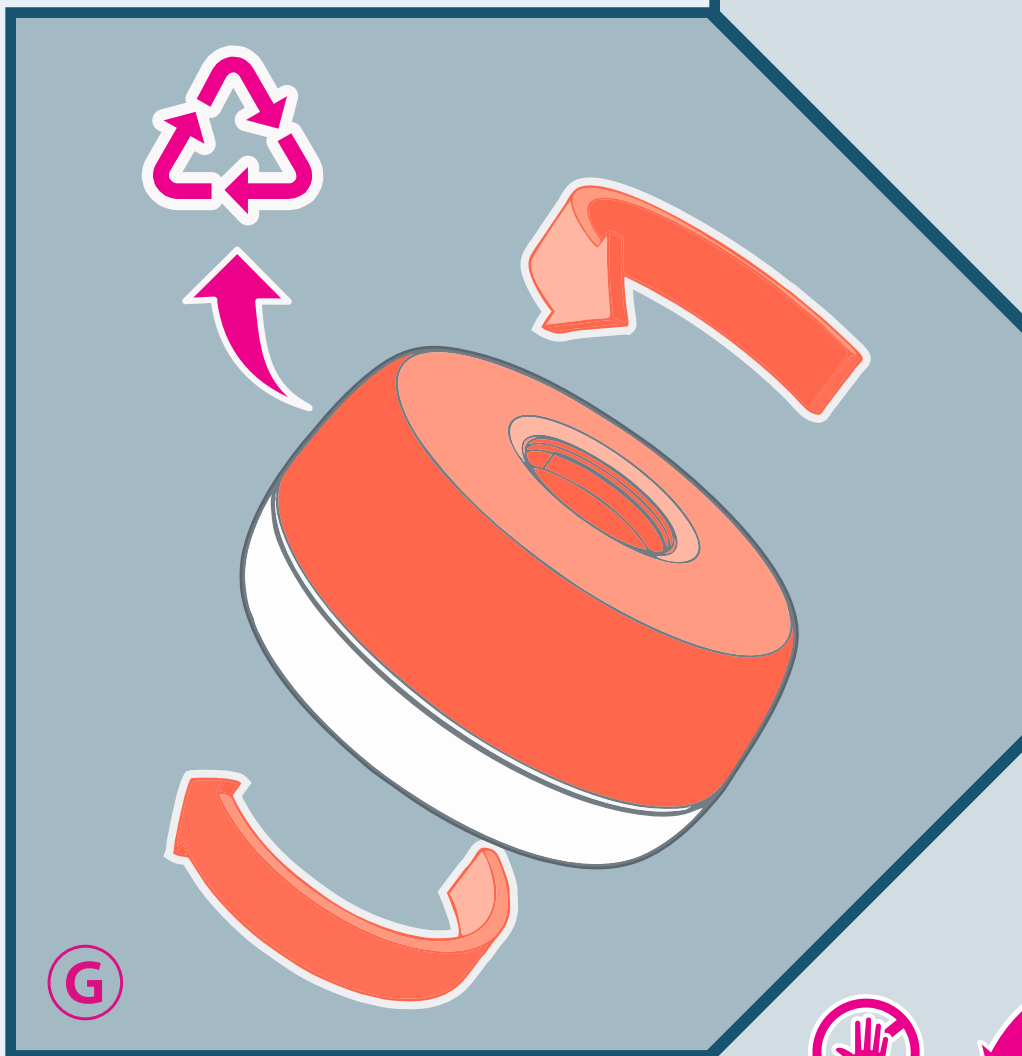
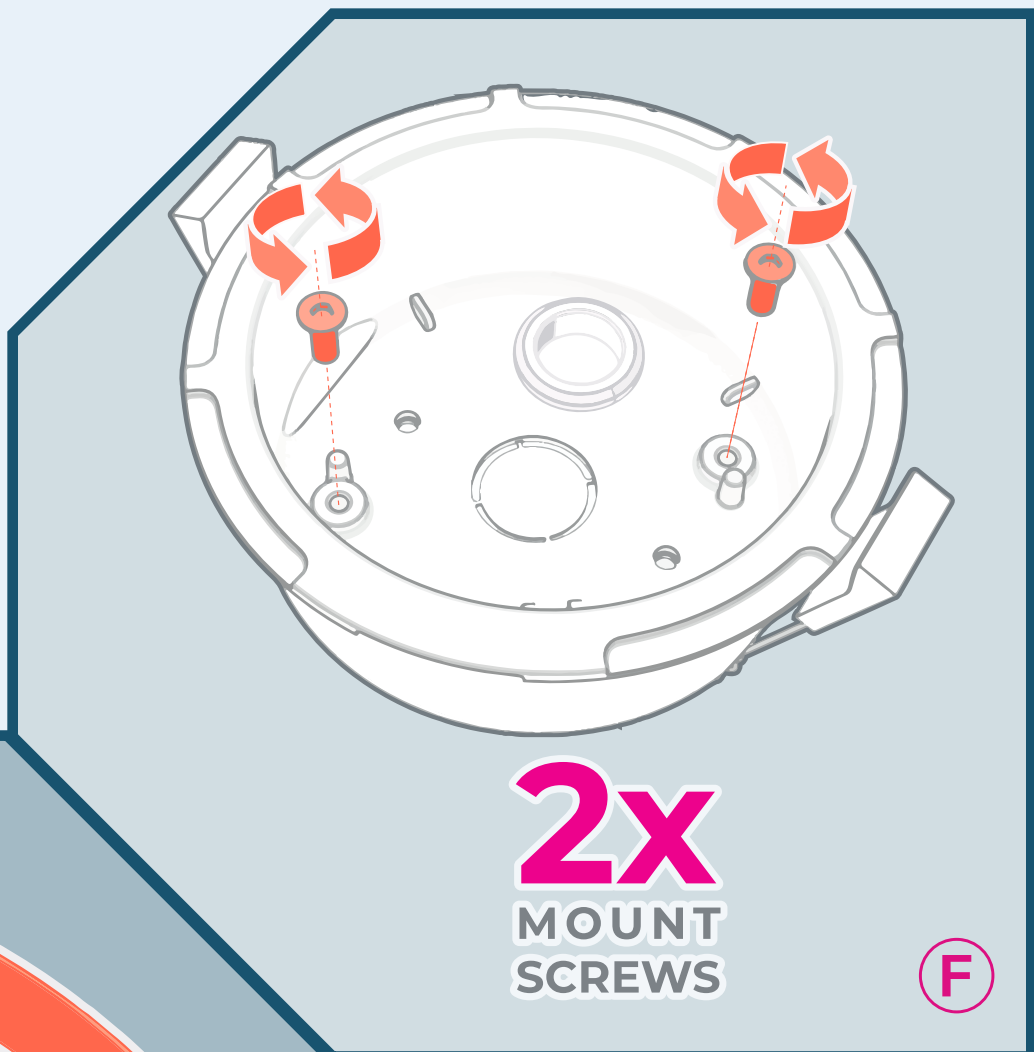


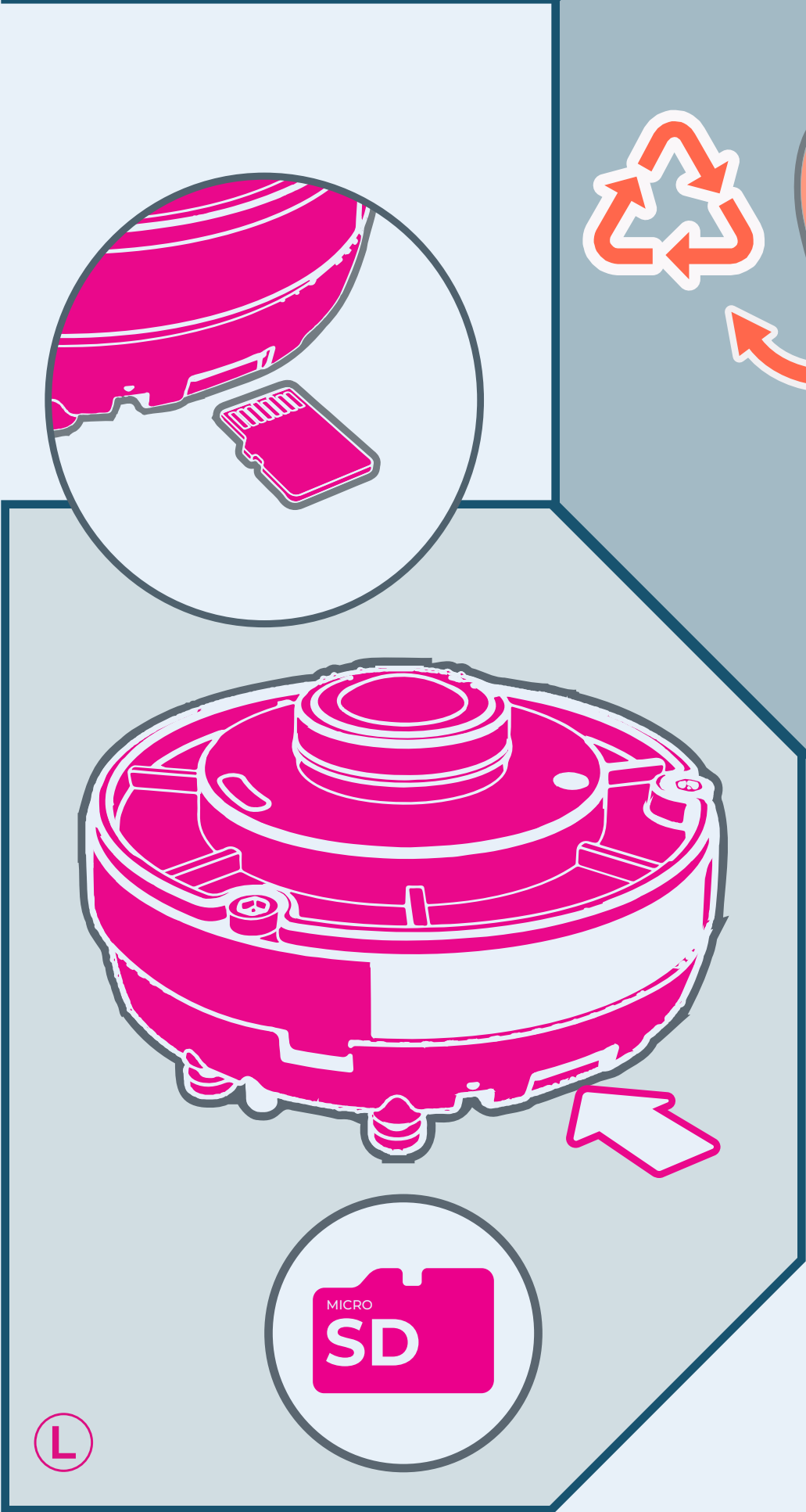
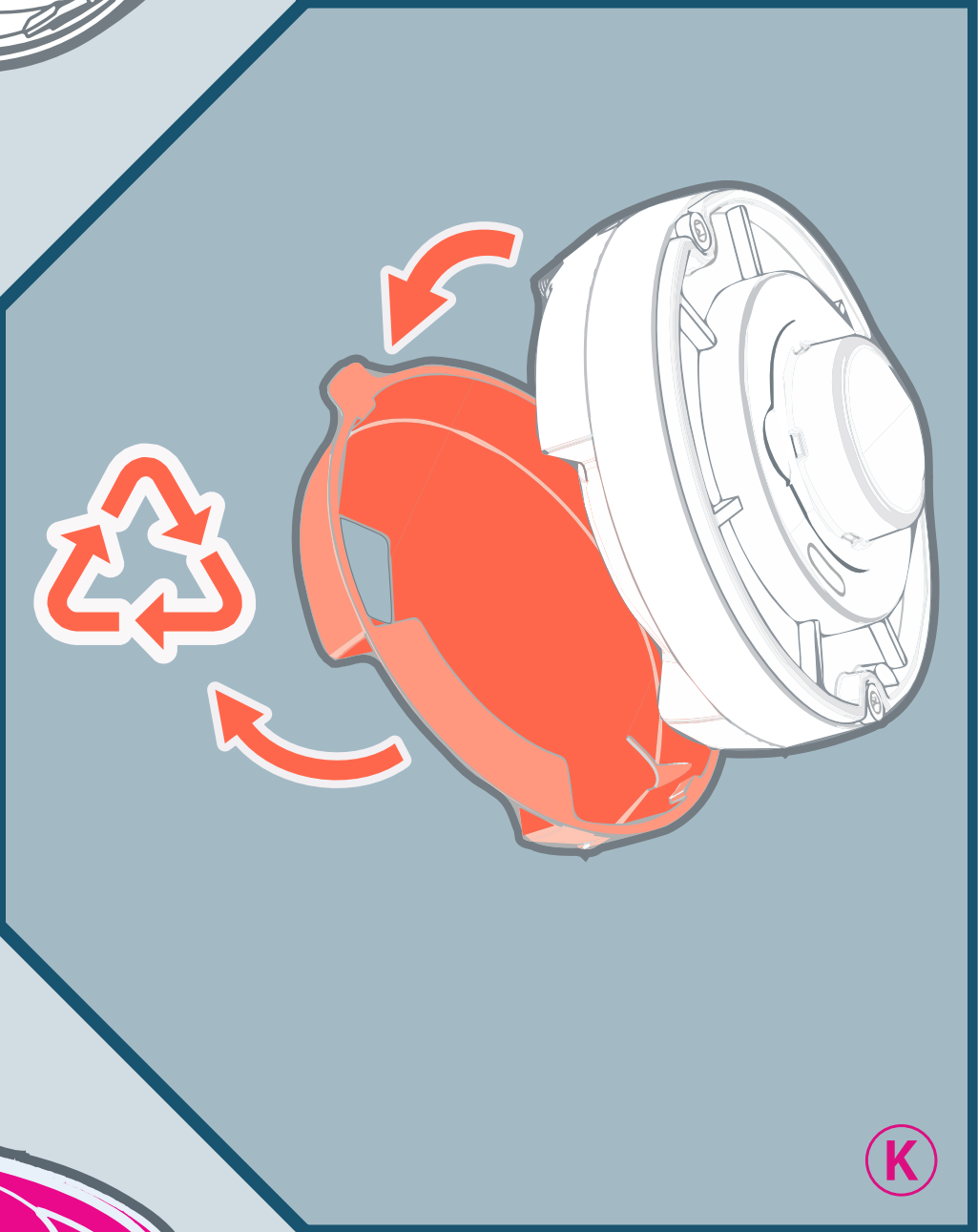
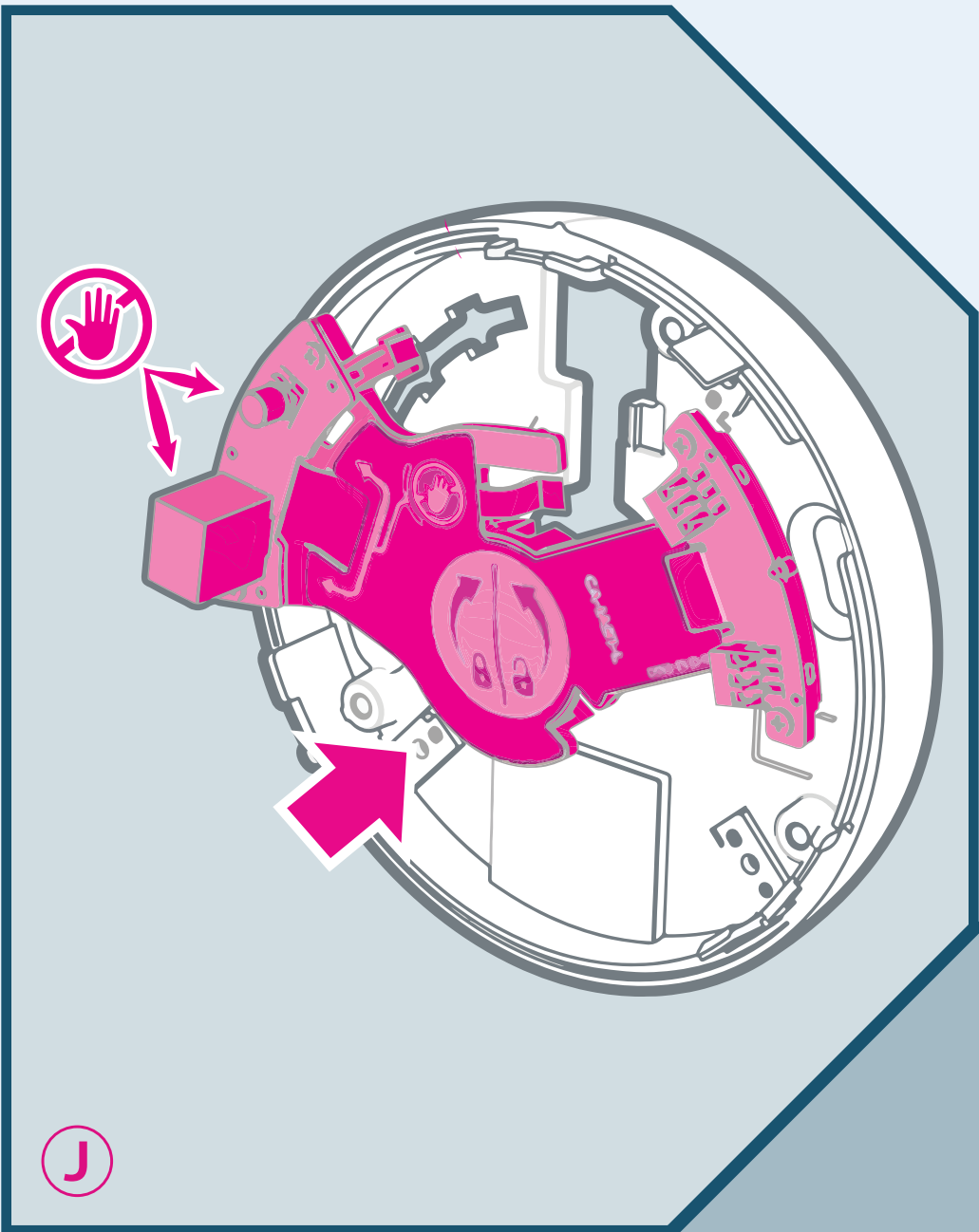
D

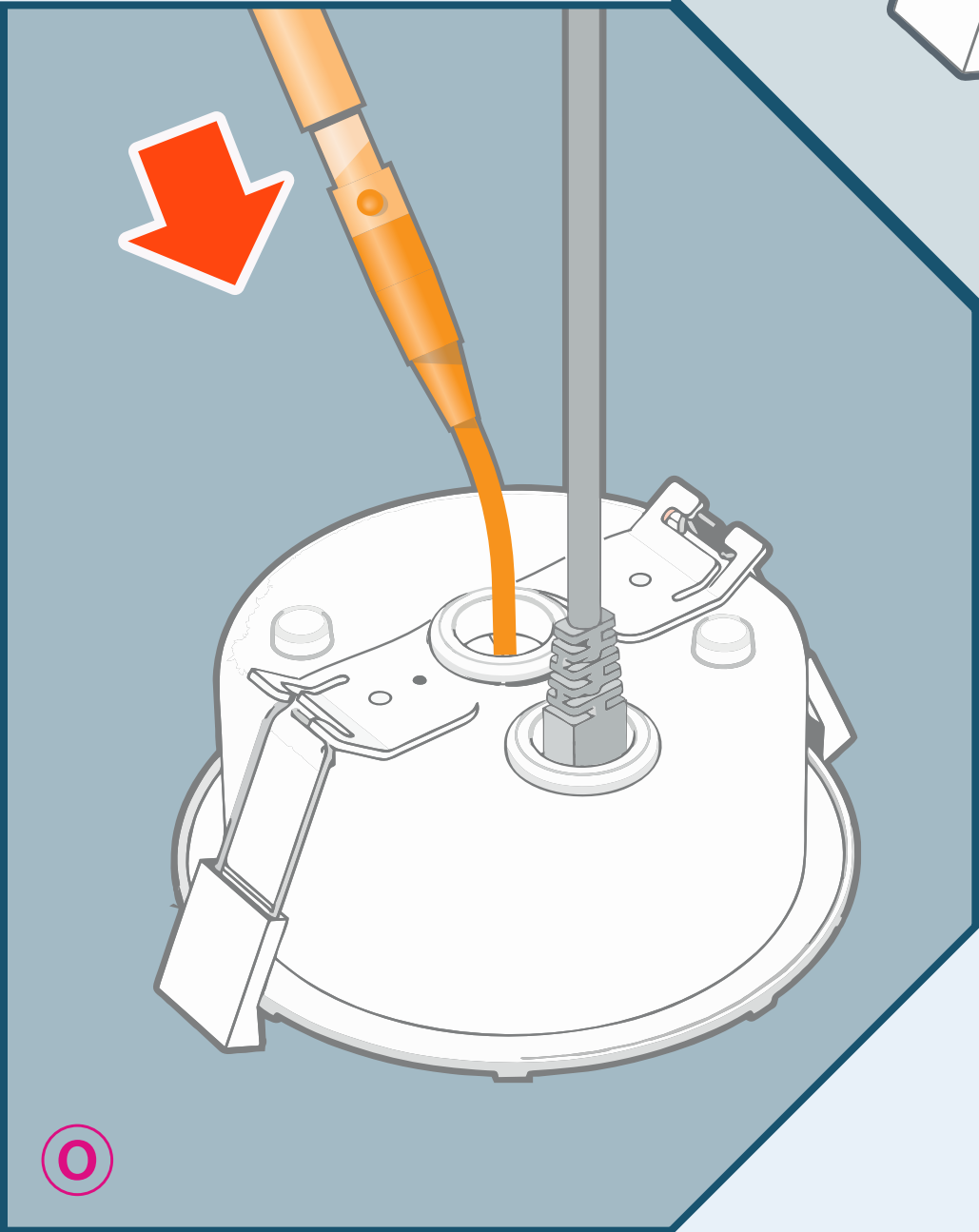
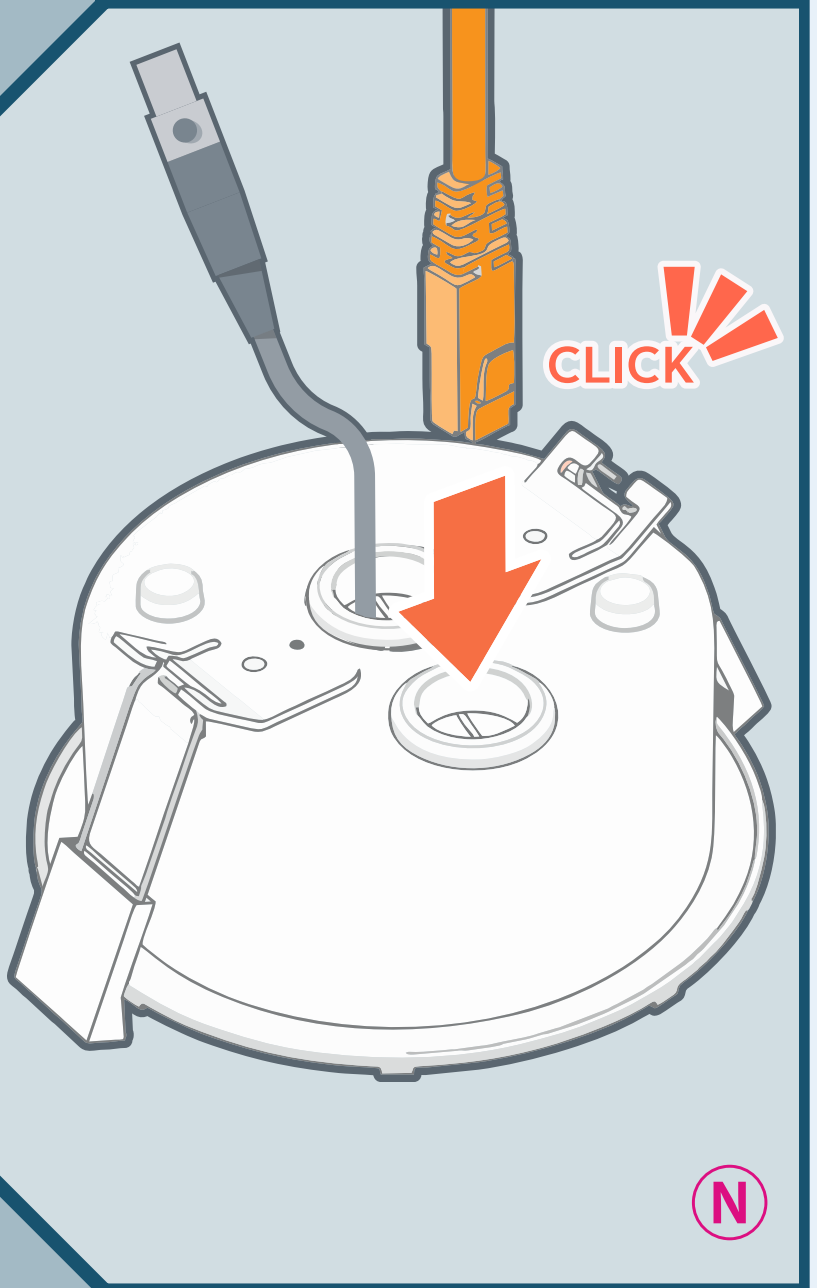
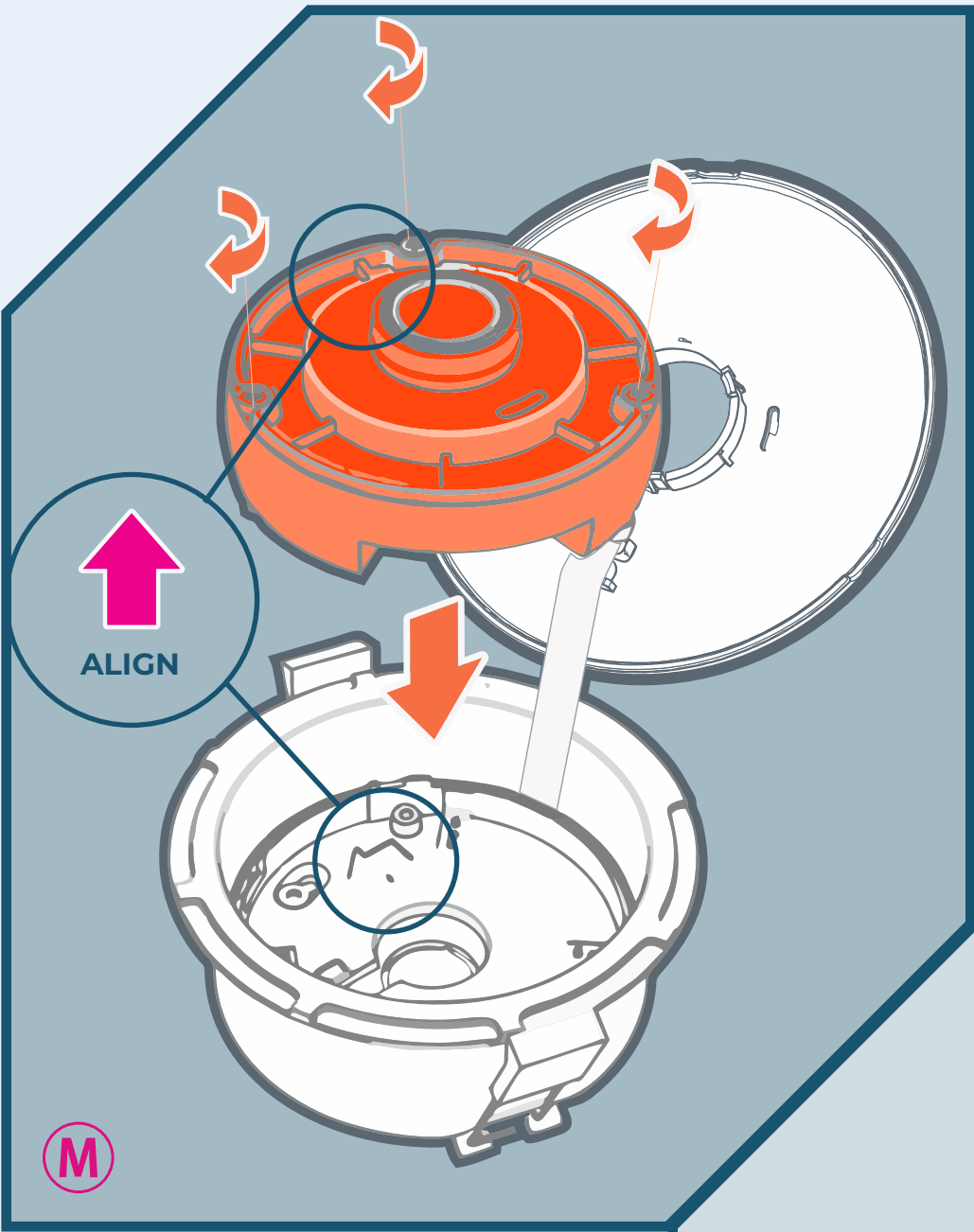
TWIST AND REMOVE
WITH PLIERS
(NOT INCLUDED)

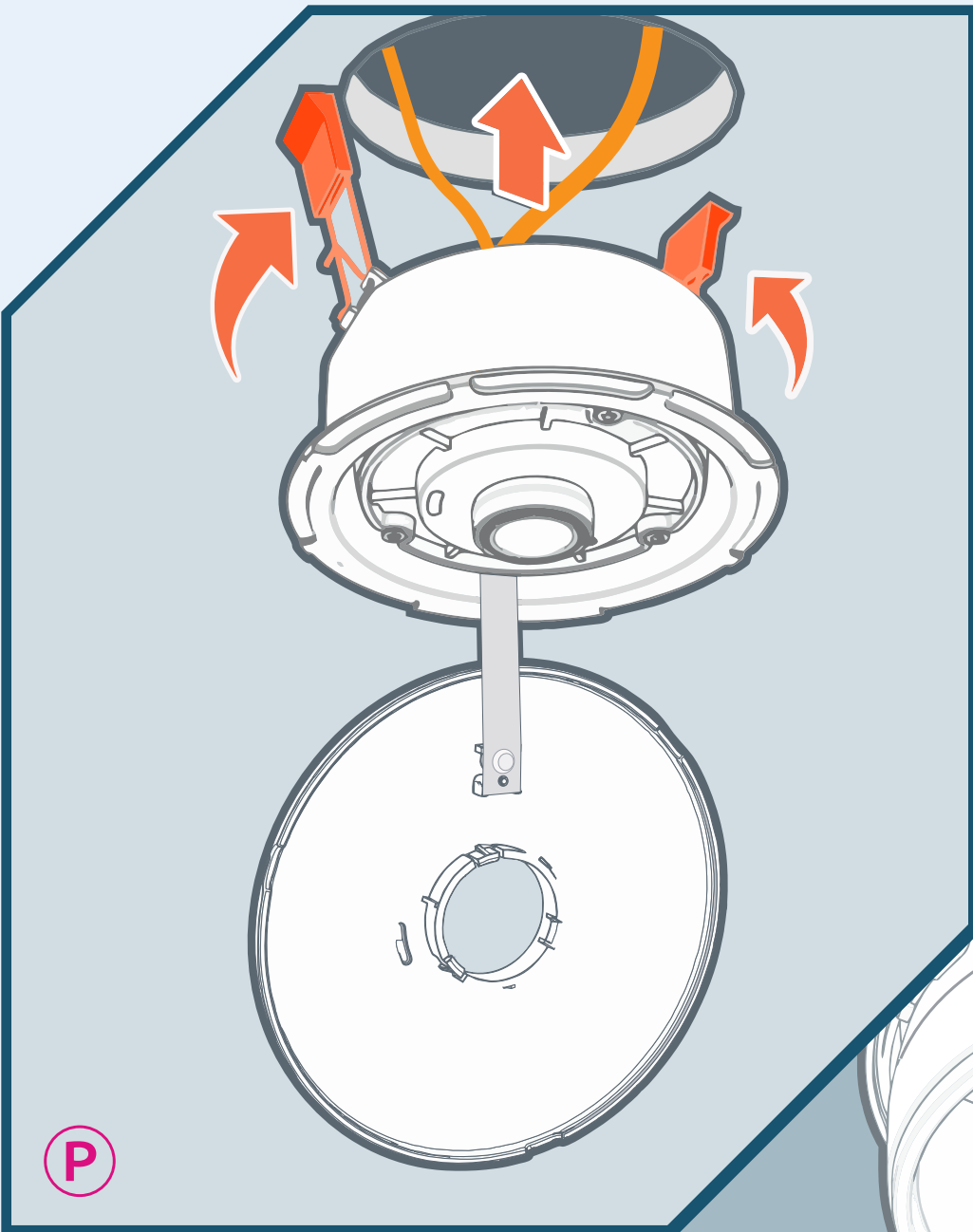


E

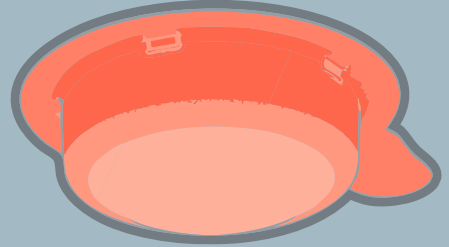
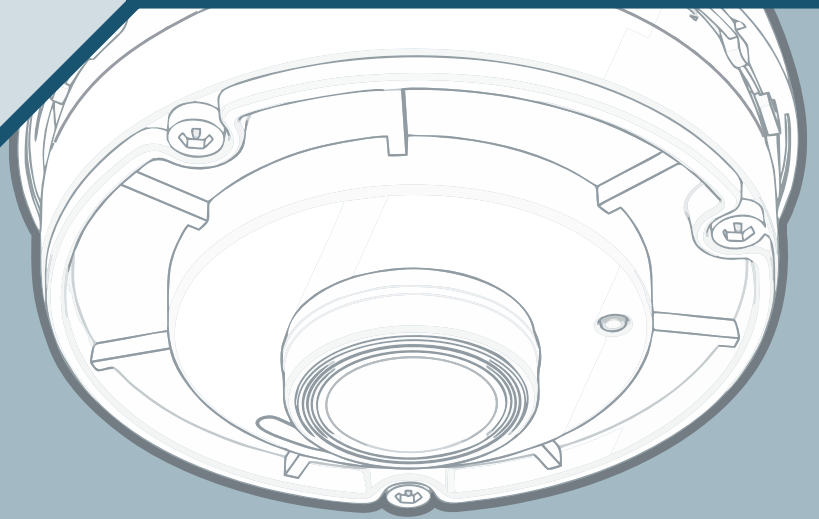




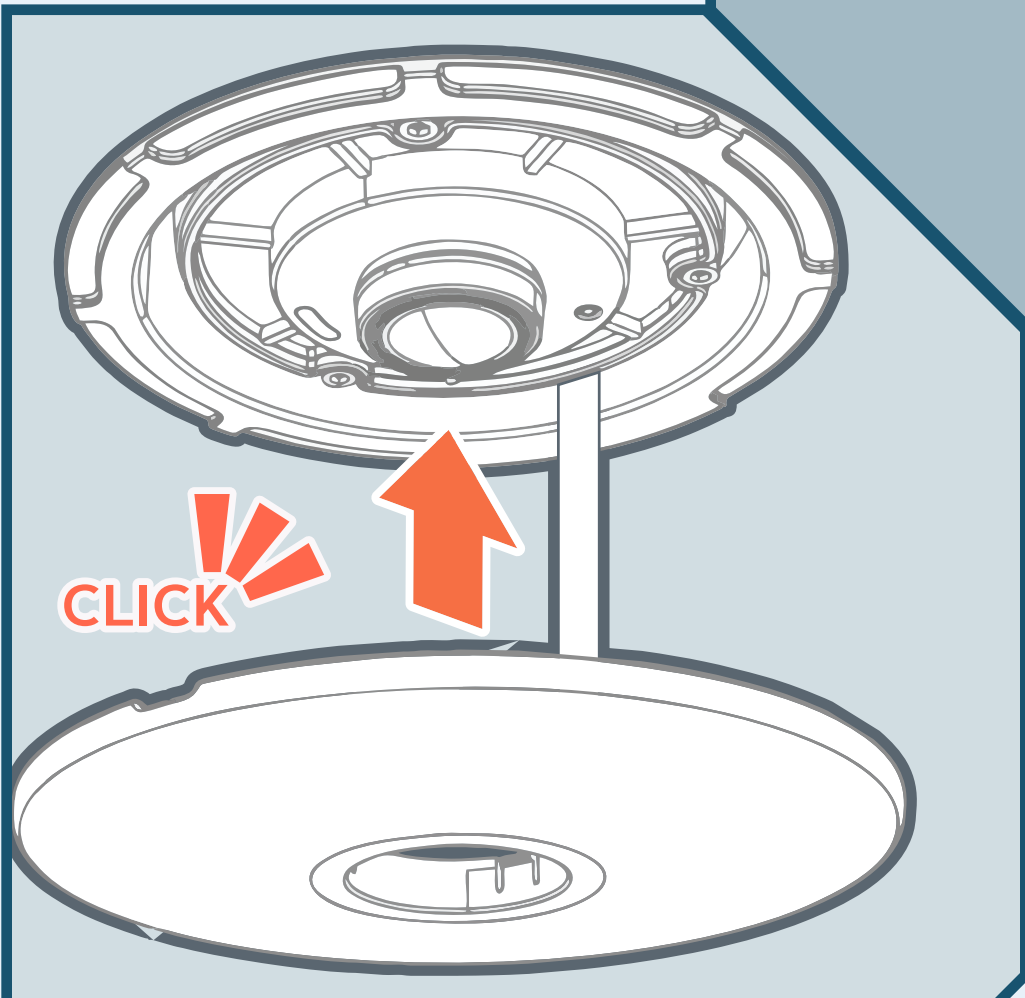




P



Q



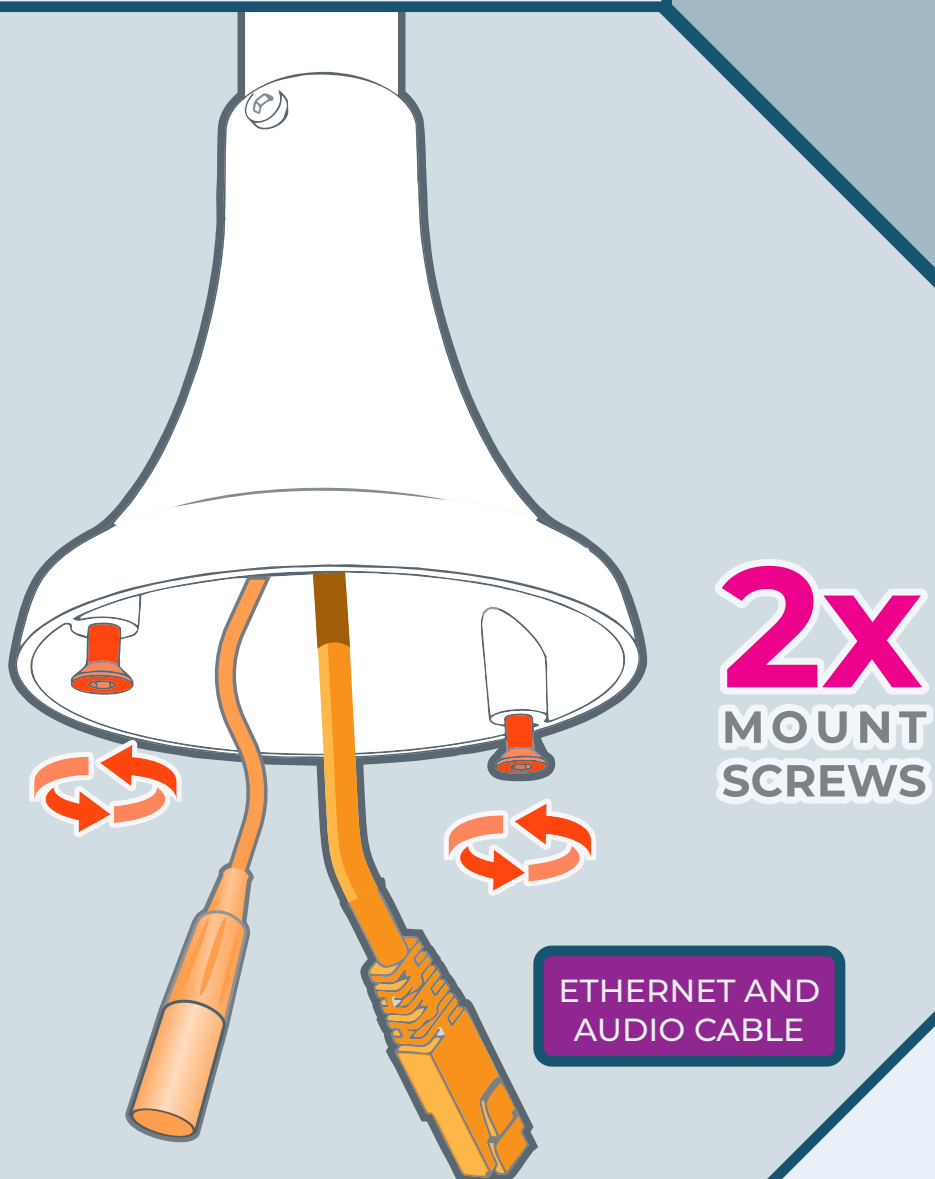
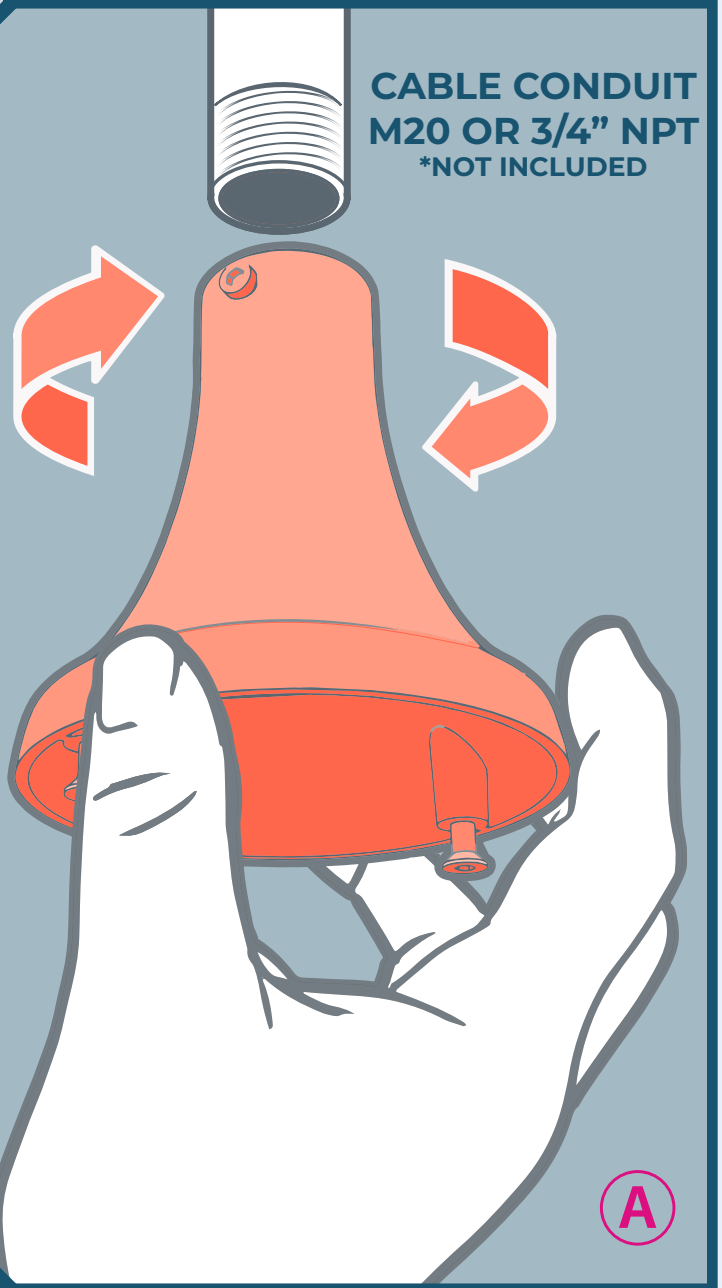
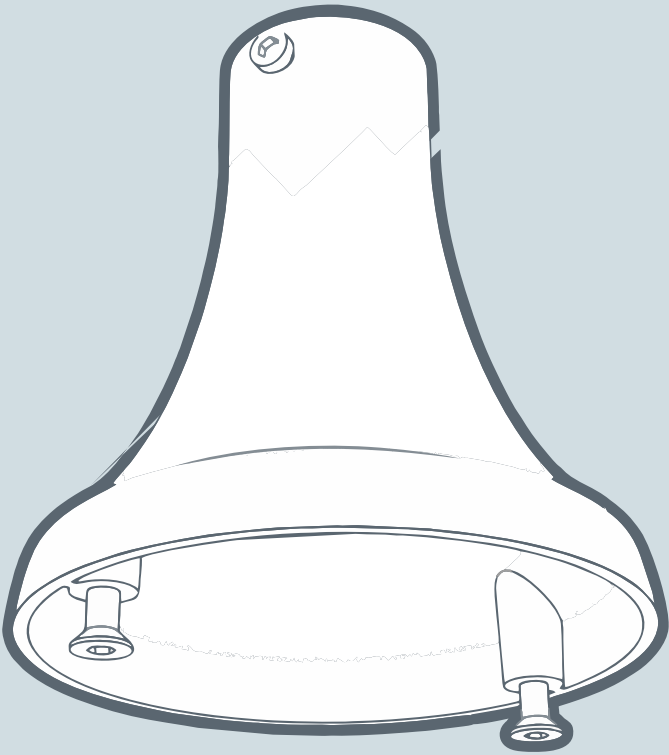
CLICK

R

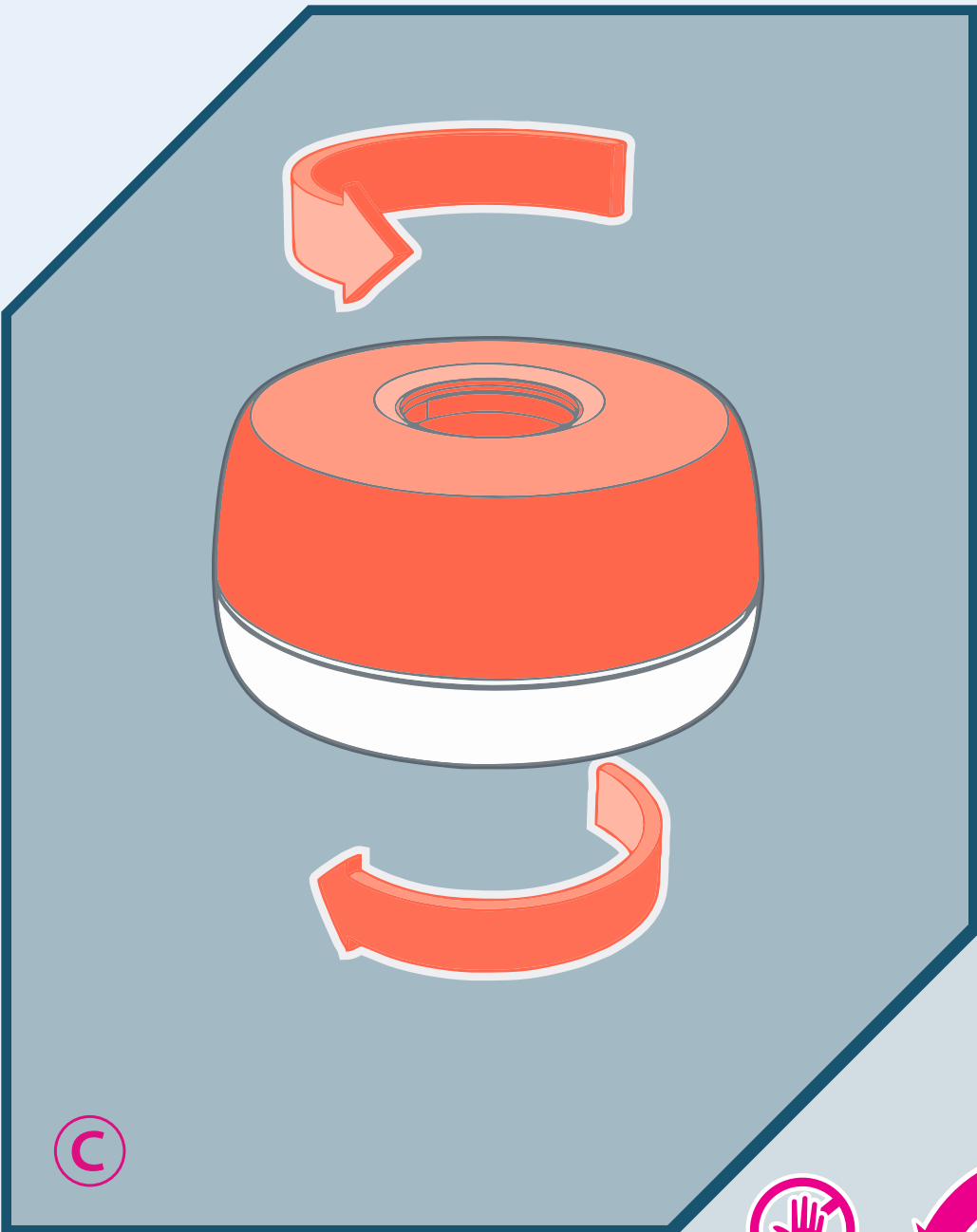


PENDANT MOUNT

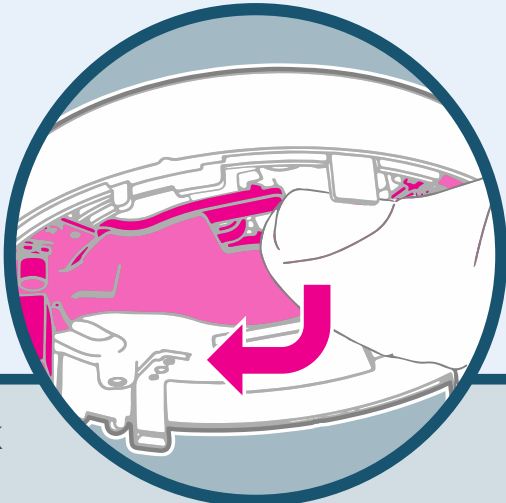
ADDITIONAL PARTS REQUIRED



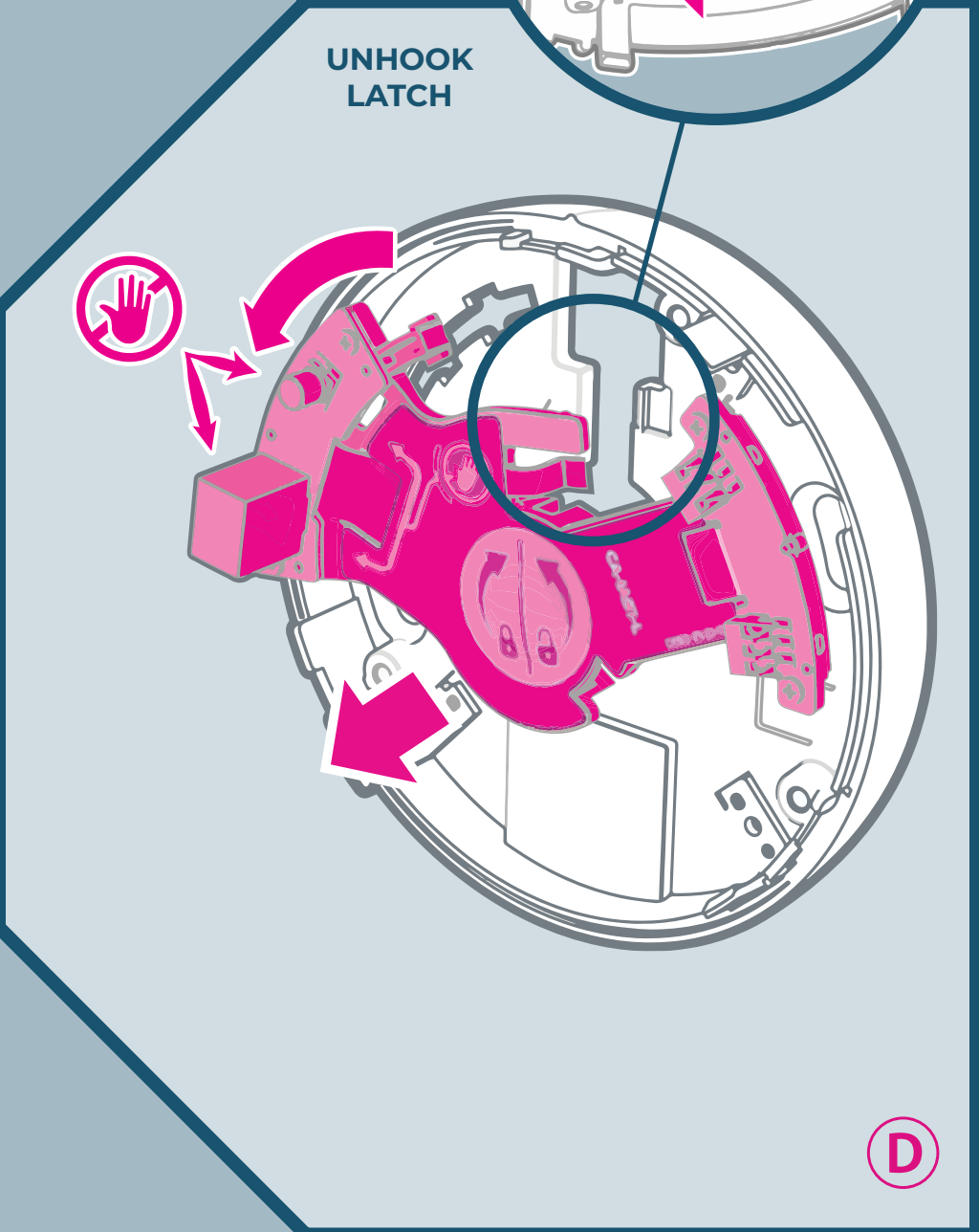
B



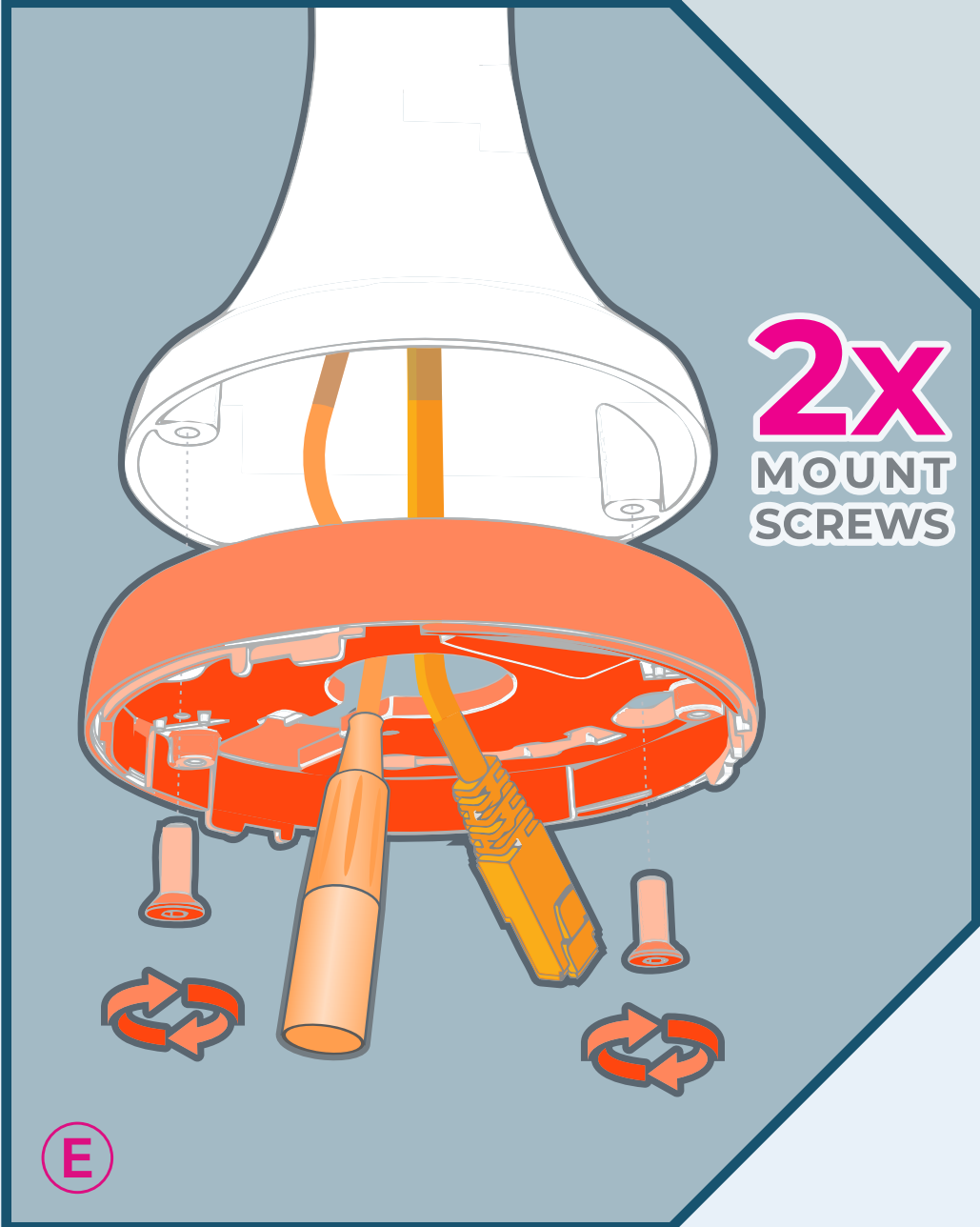
C



UNHOOK
LATCH

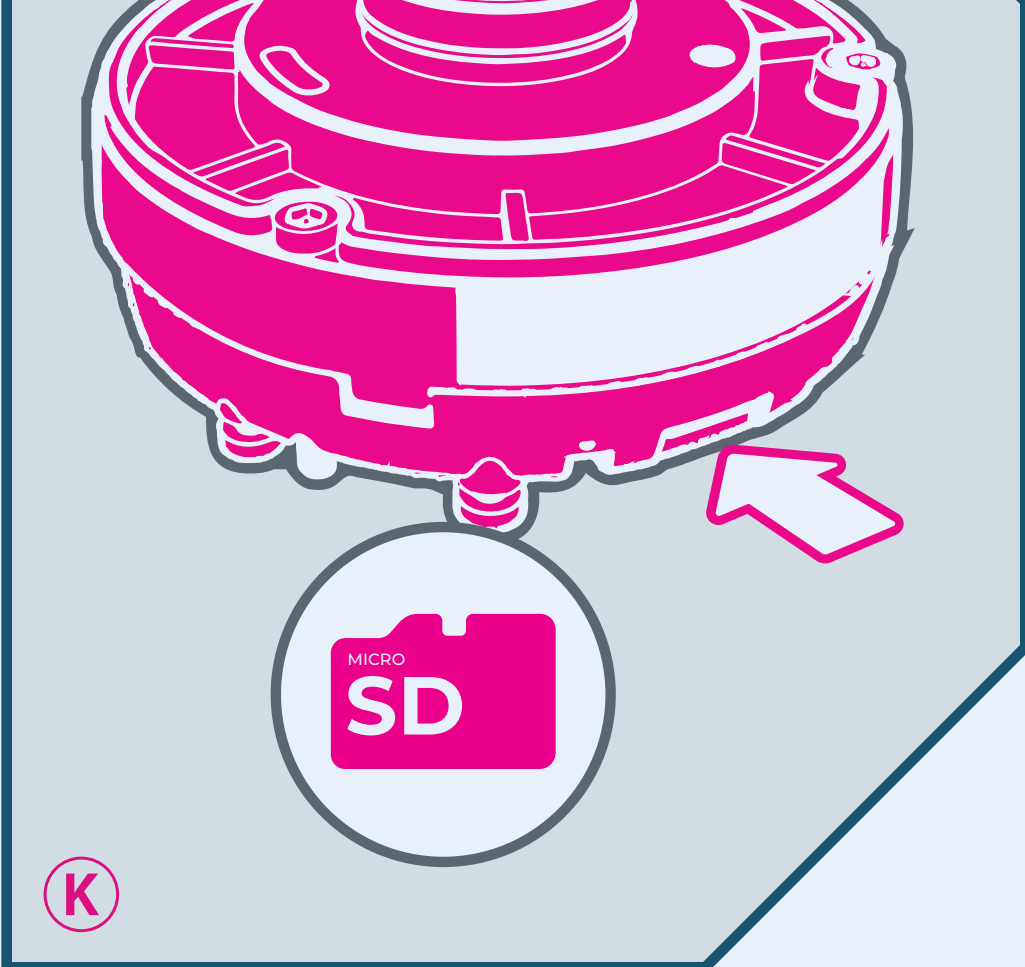
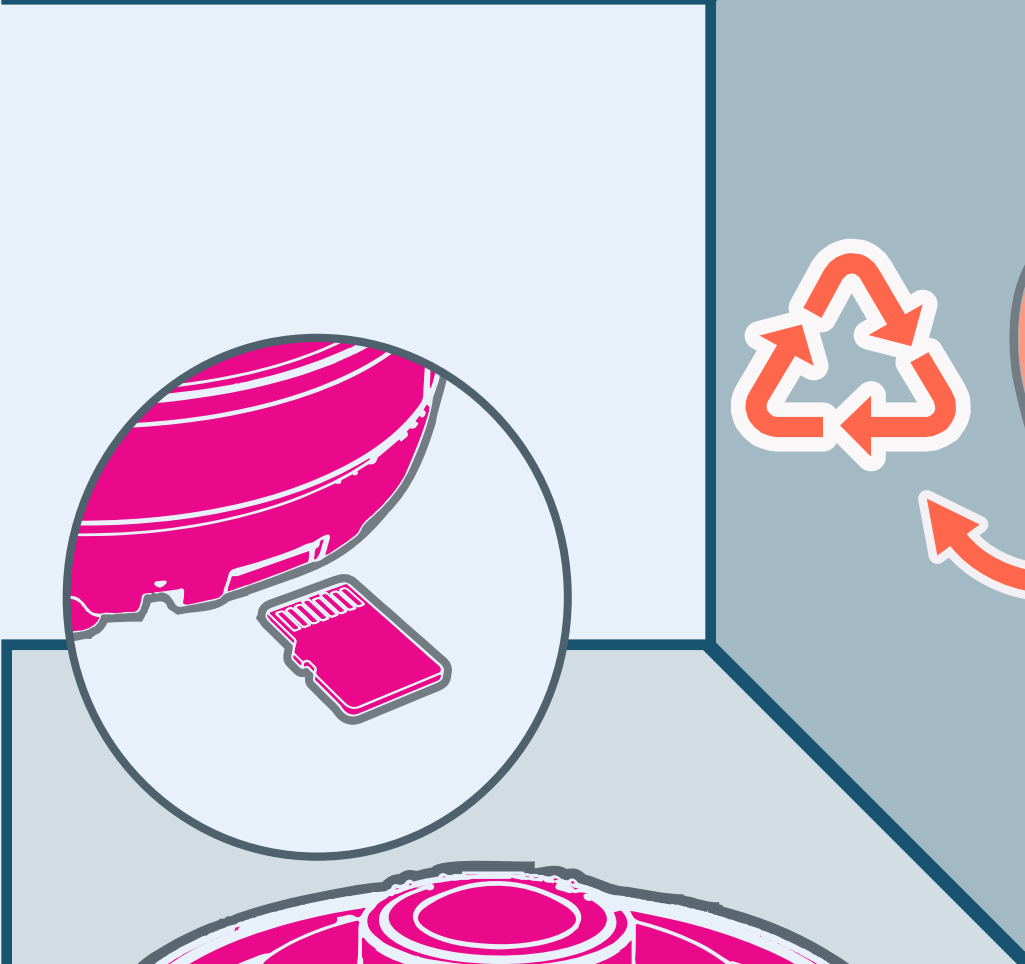
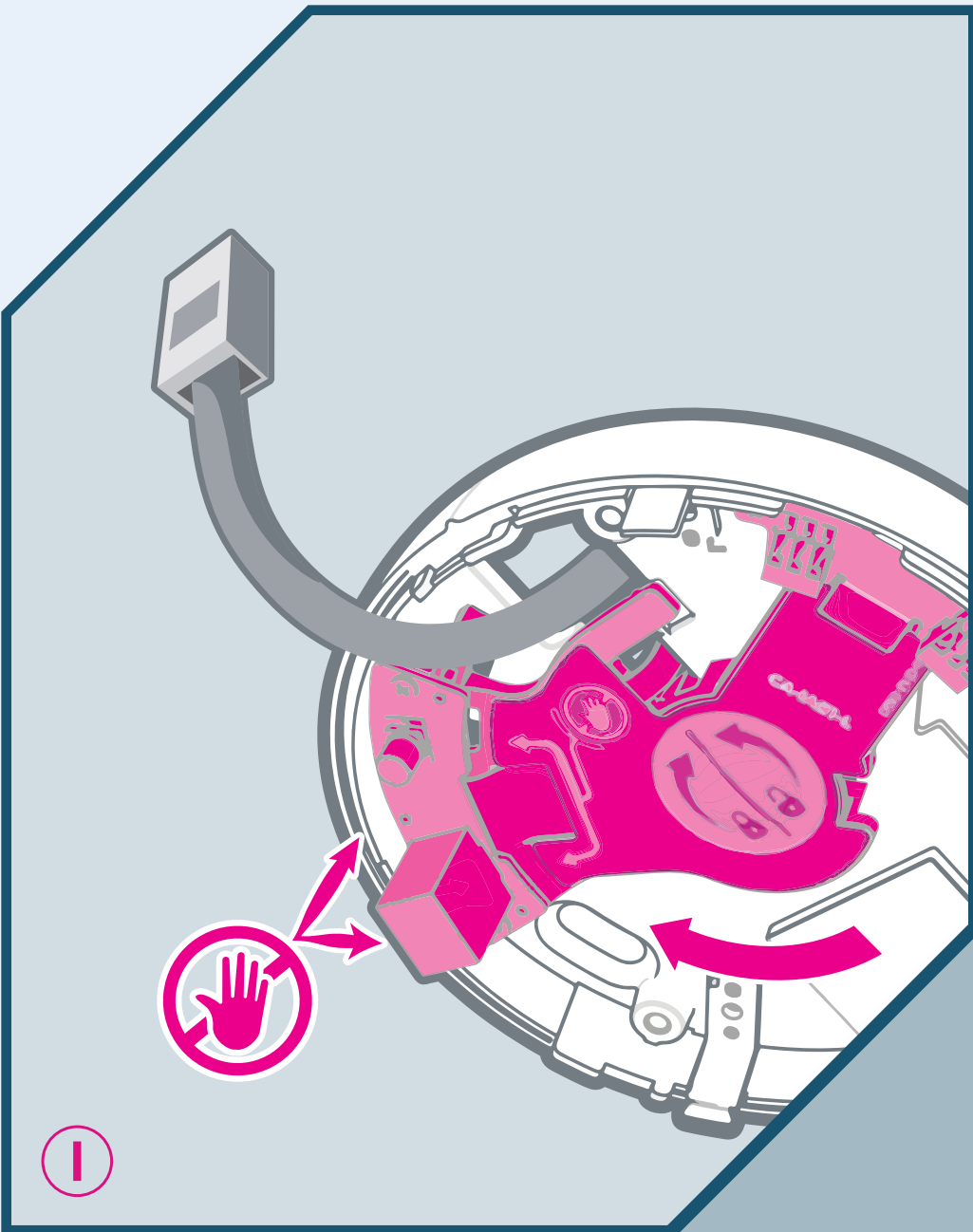


D

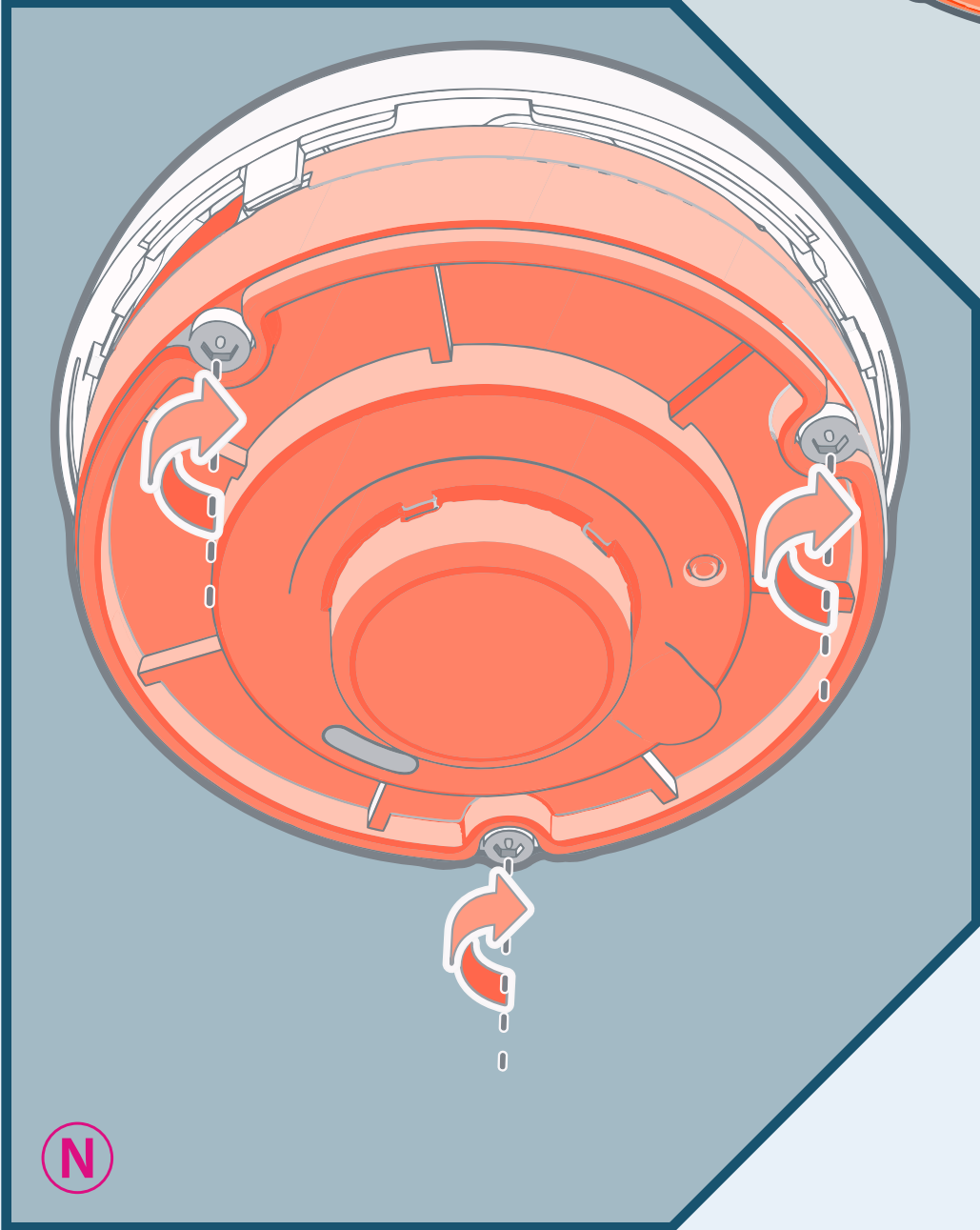
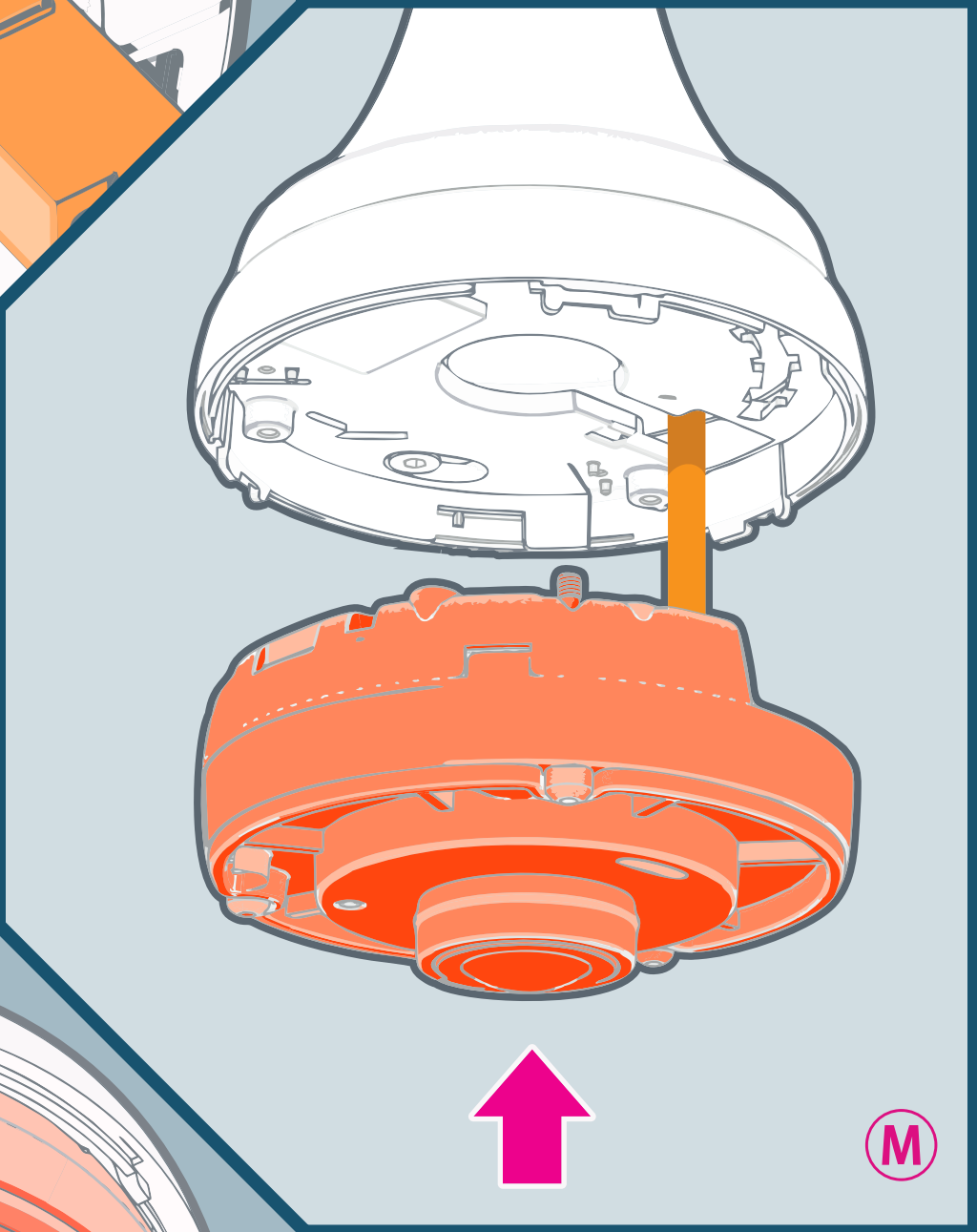
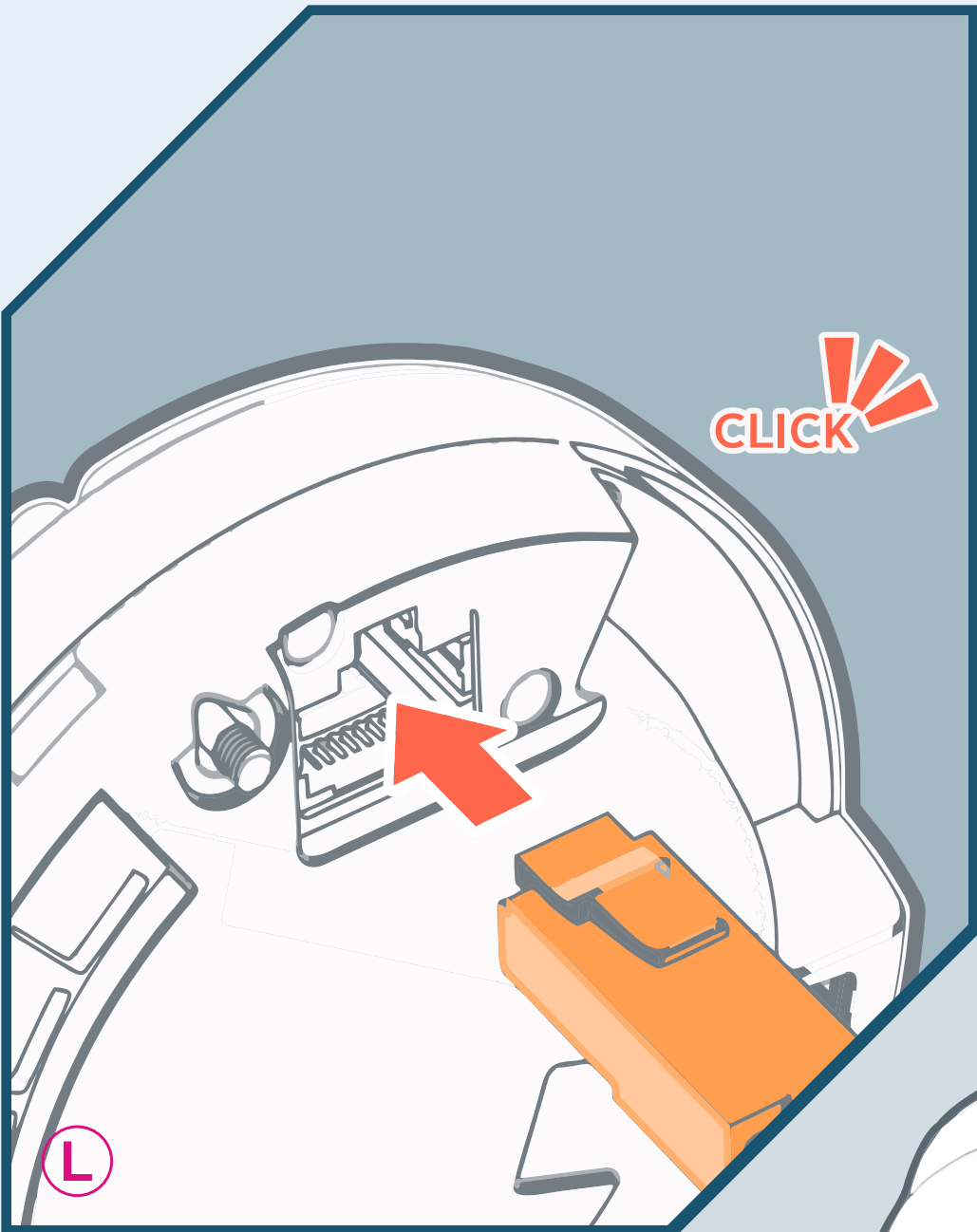


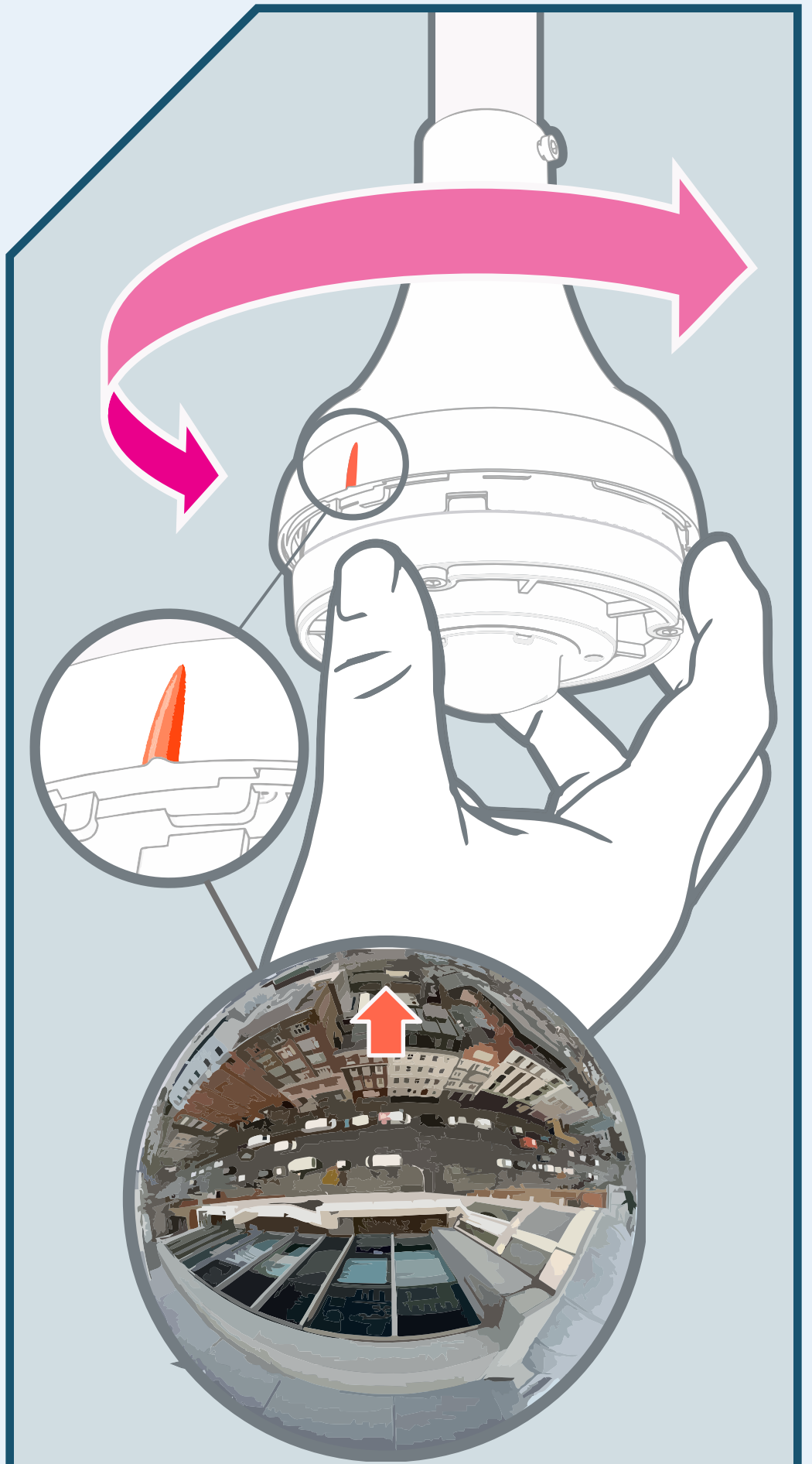
2x
MOUNT
SCREWS

E



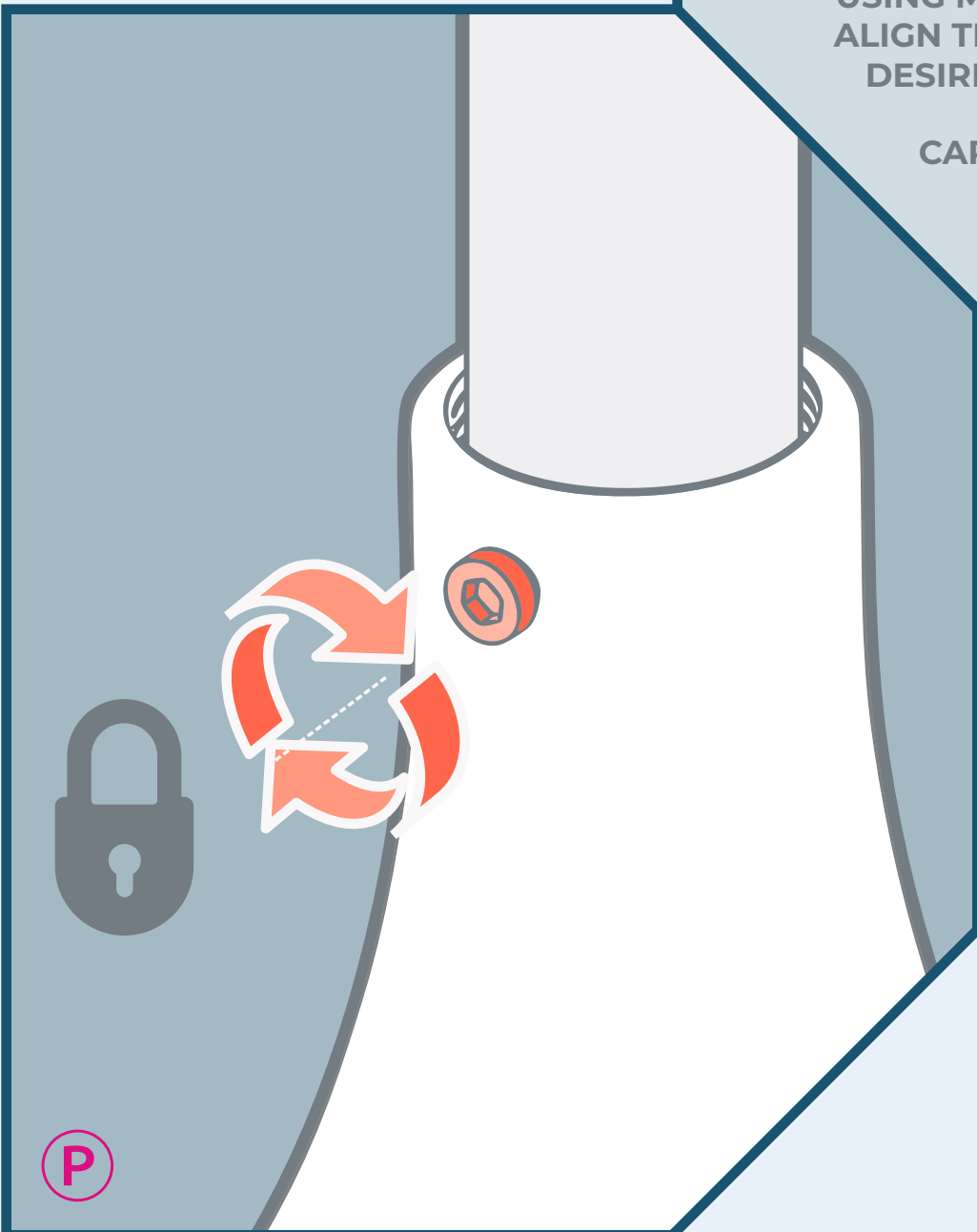
CLICK

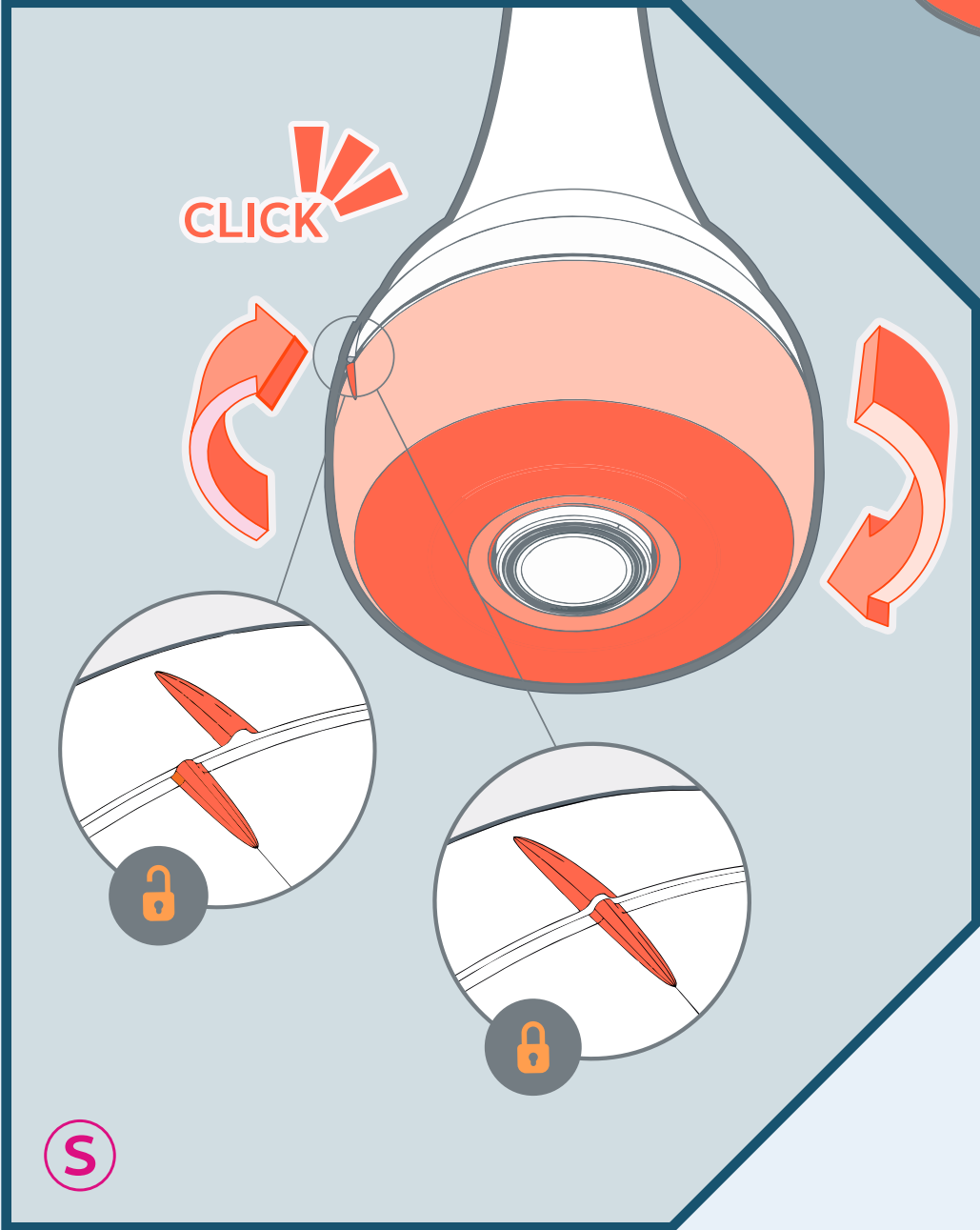
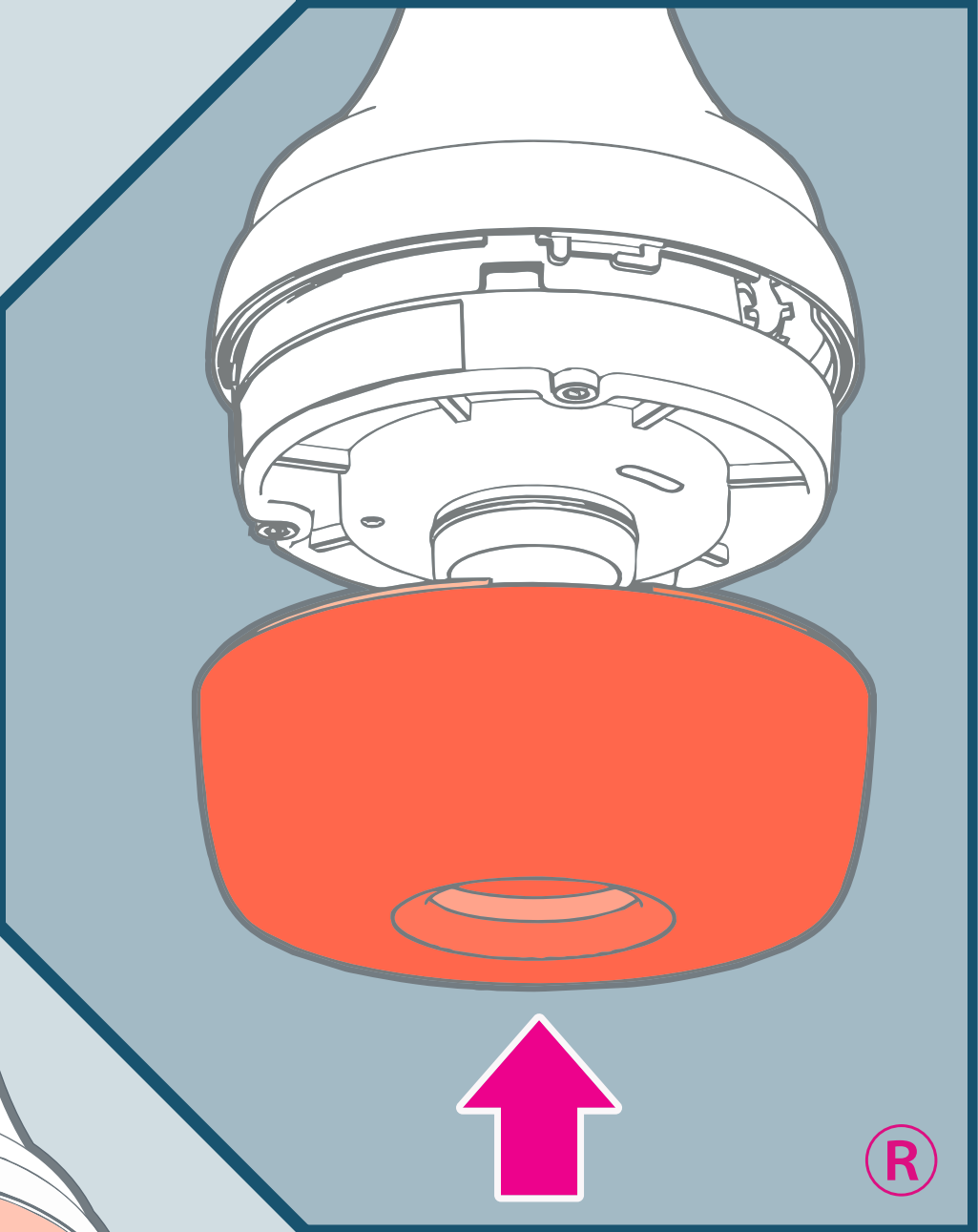
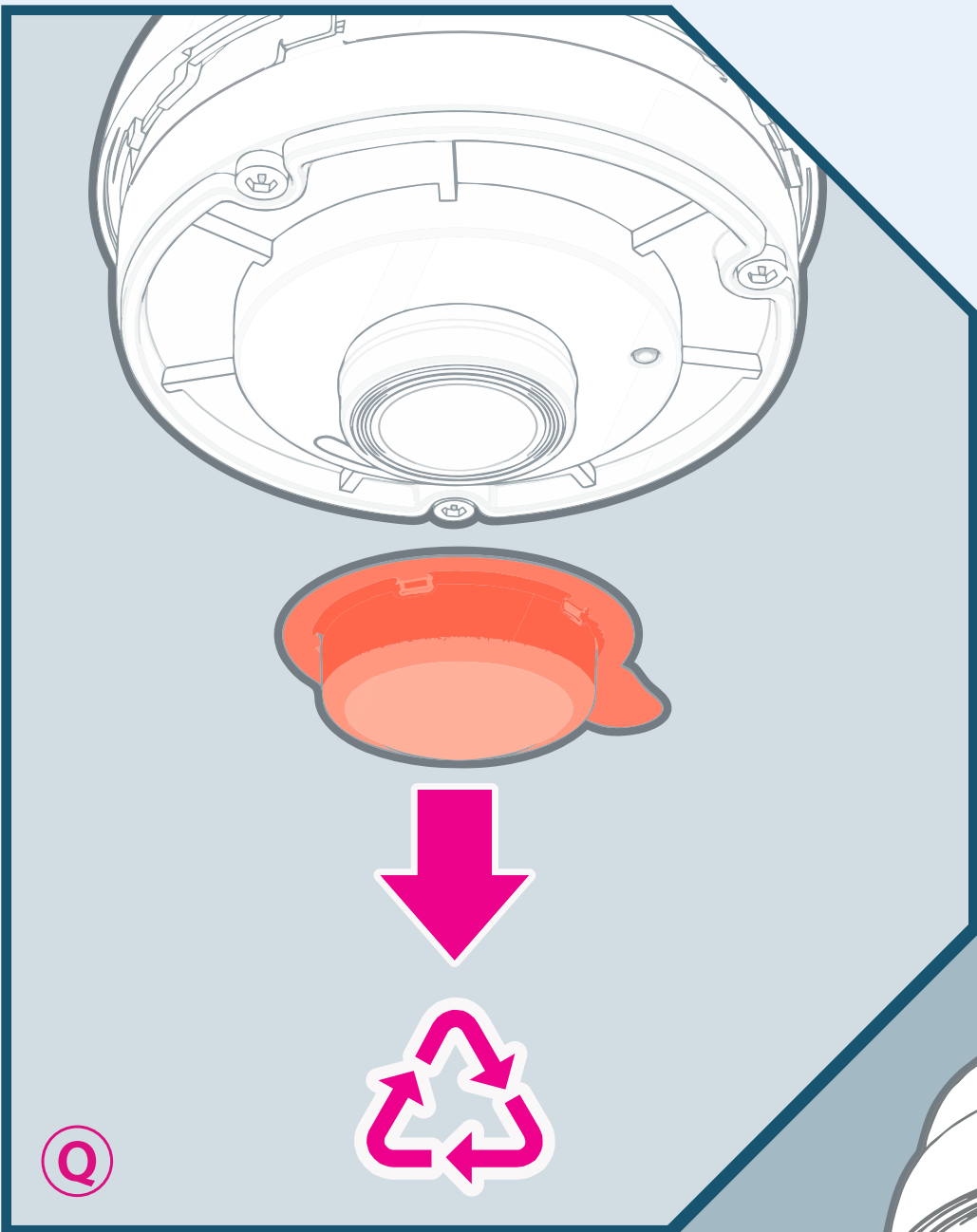




USING MARKER AS A REFERENCE,
ALIGN THE PENDANT MOUNT FOR
DESIRED IMAGE ORIENTATION

CARE: OVER-ADJUSTING
THE ANGLE MAY
UNSCREW
THE CAMERA.







ONVU LEARNING



[SUPPORT.ONVULEARNING.COM](https://support.onvulearning.com)

V1.4

© Copyright 2023 ONVU Technologies AG. All rights reserved. ONVU Learning is a trading name of ONVU Technologies AG. Specifications and configurations subject to change without notice. "ONVU", the "circles device" are trade marks, and in some cases pending, registered or protected trade marks, of ONVU Learning Limited, including variously under registration or protection in the UK and India.

